
Bergtour Rugghubel



Distanz: 14.1 km

Zeitbedarf: 6 h

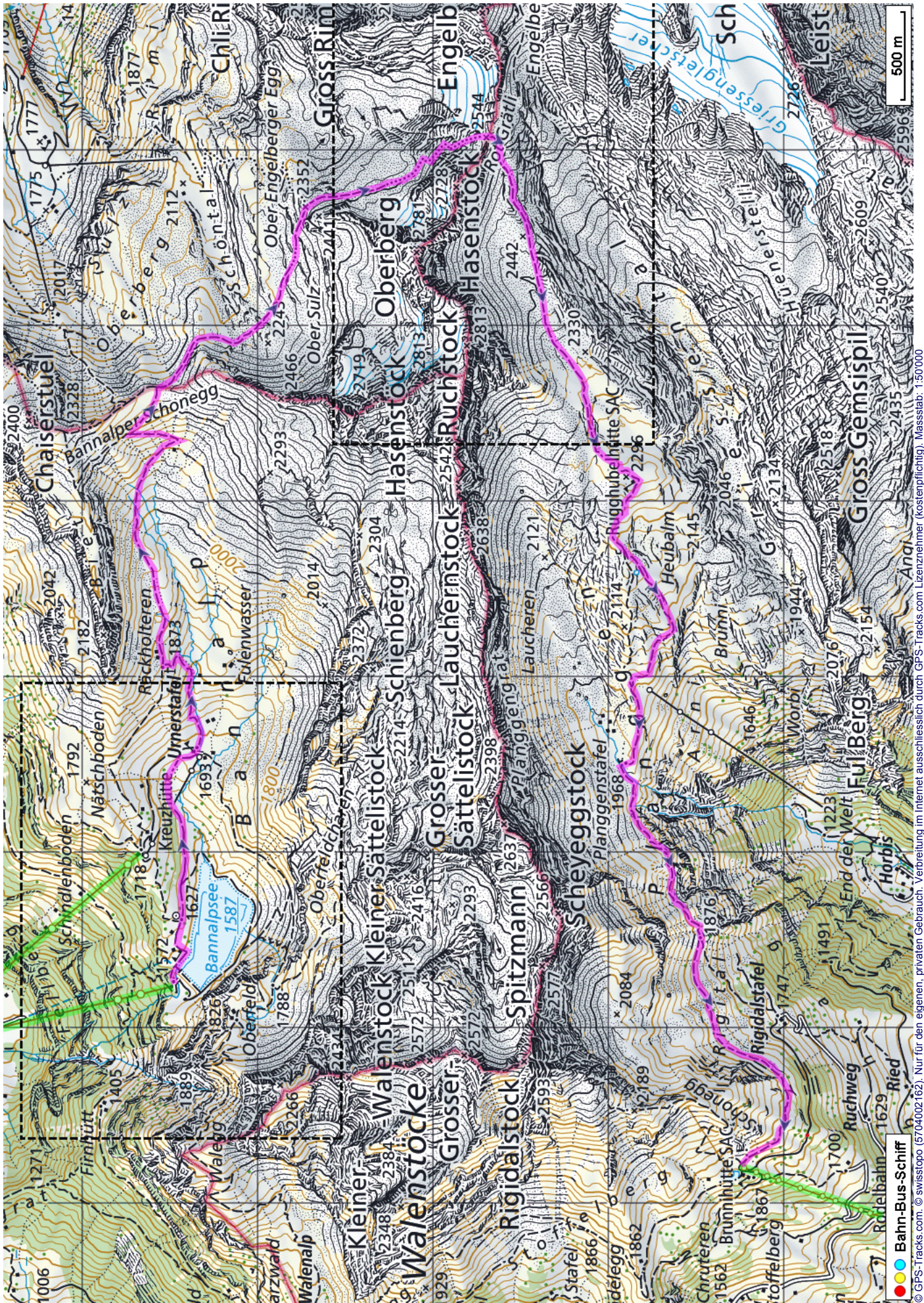
Aufstieg: 1200 m

Abstieg: 915 m

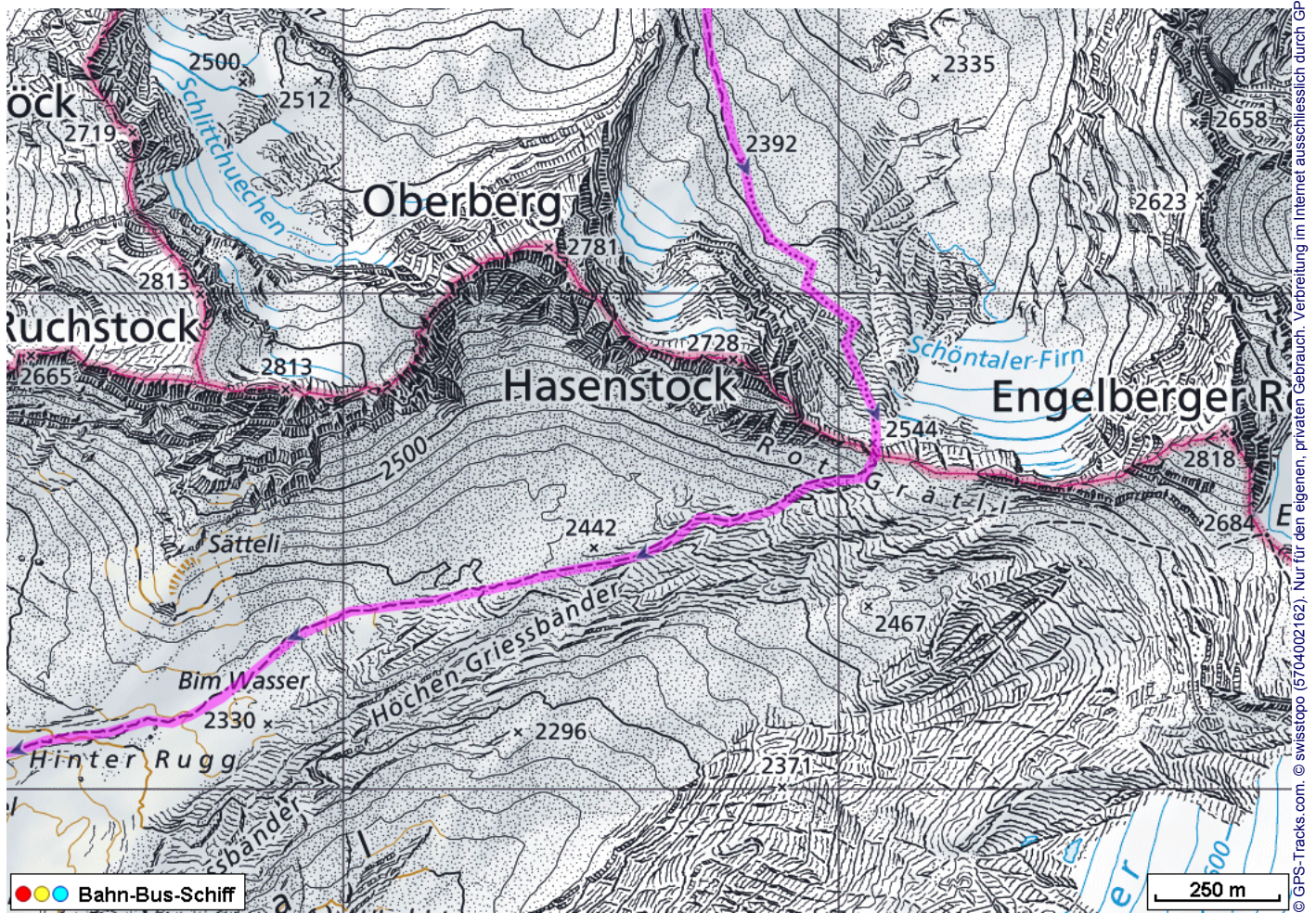
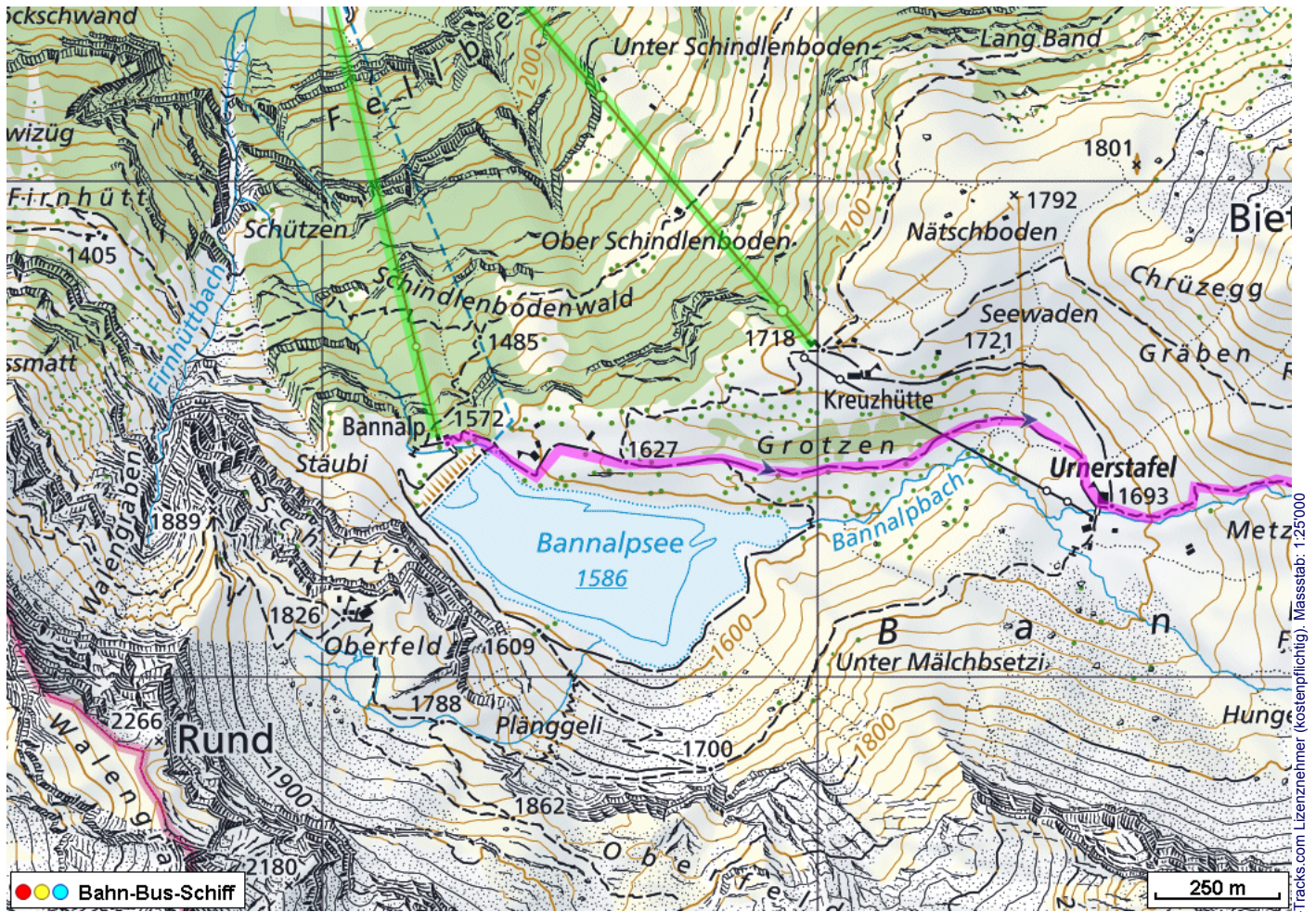
Höchster Punkt: 2559 m.ü.M.

Tourenbeschreibung

Bergtour Rugghubel



Bergtour Rugghubel



Bergtour Rugghubel



Höhenprofil

