
Bergwanderung Sidelen Albert-Heim



Distanz: 11.2 km

Zeitbedarf: 6 h

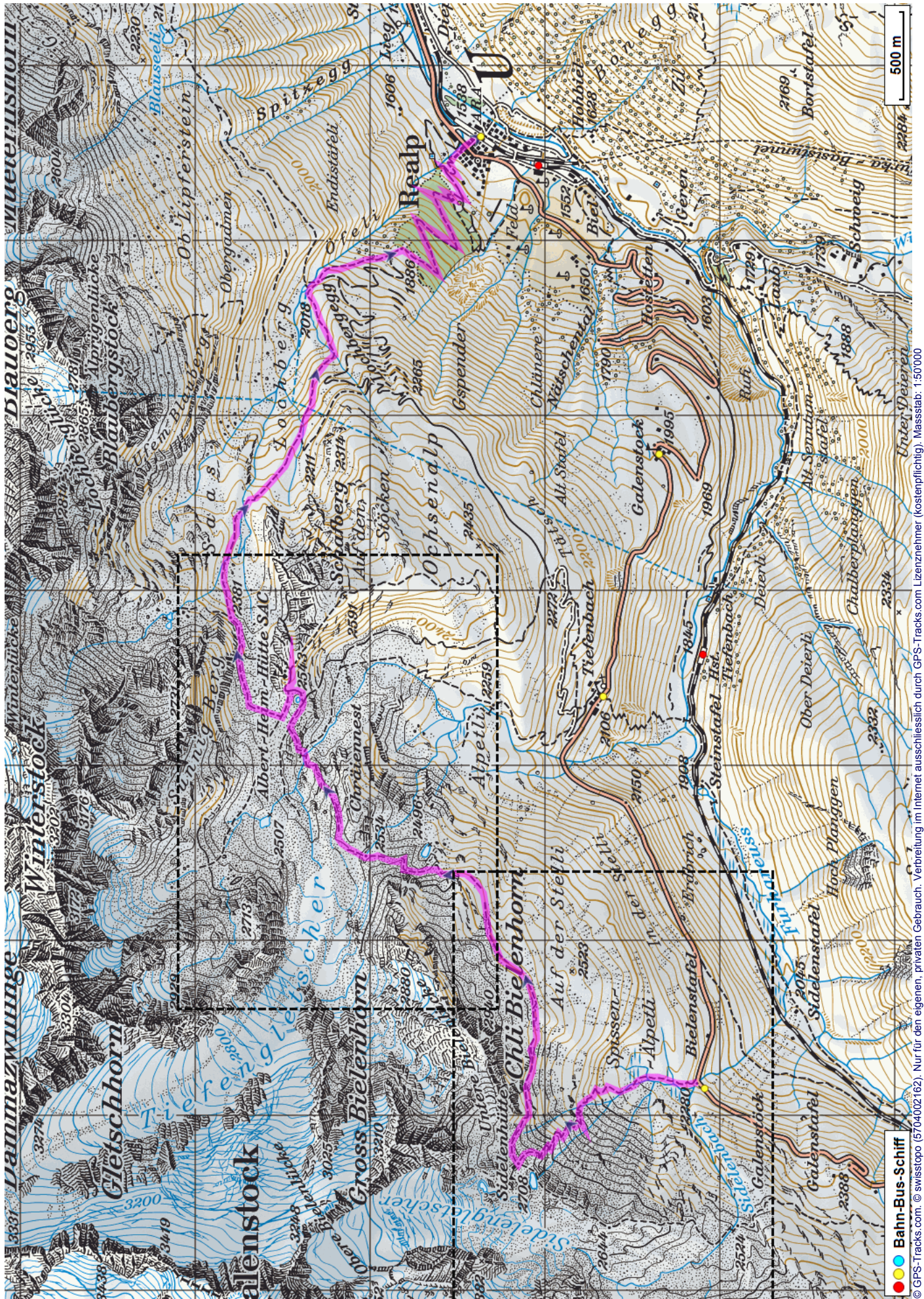
Aufstieg: 660 m

Abstieg: 1438 m

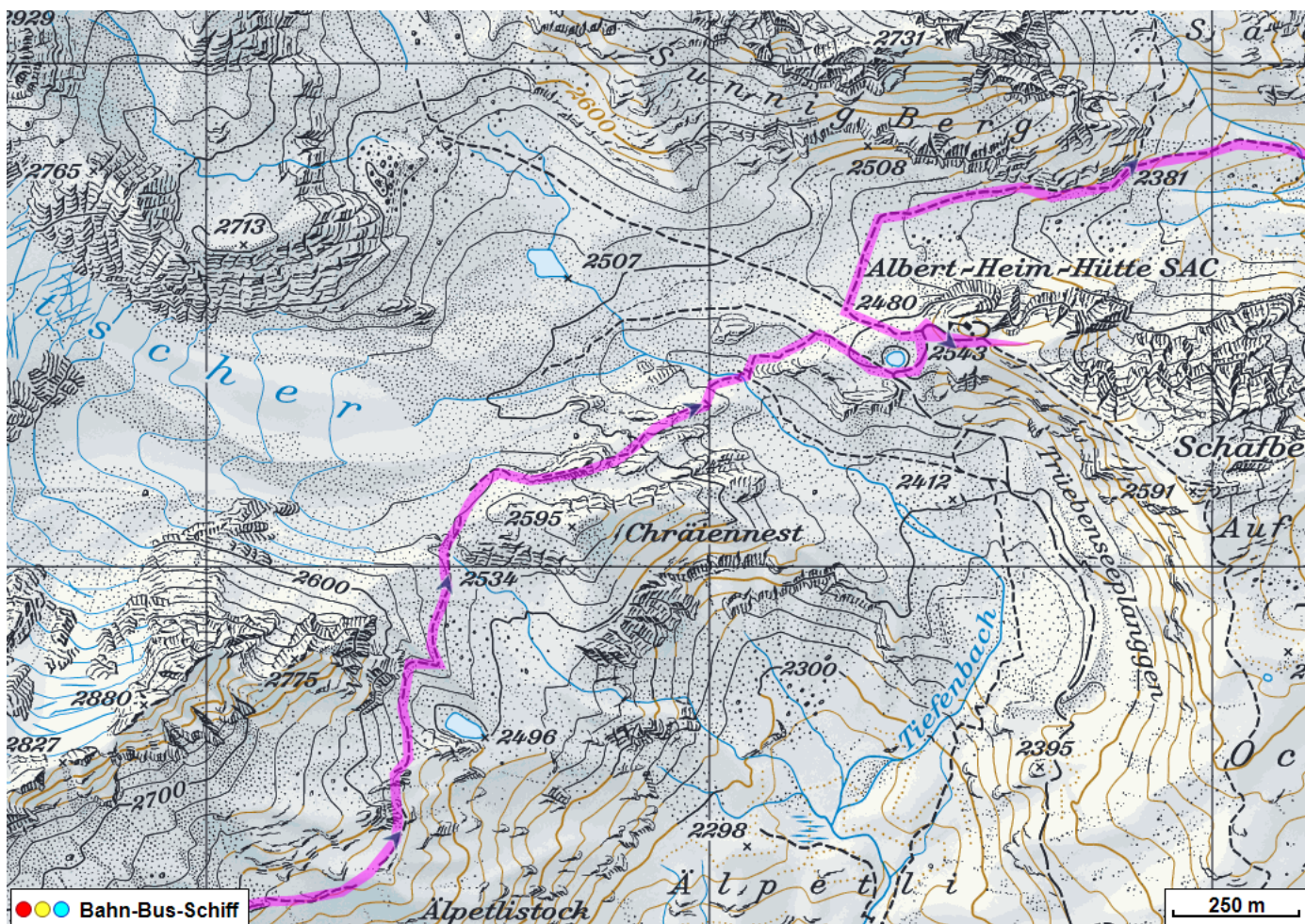
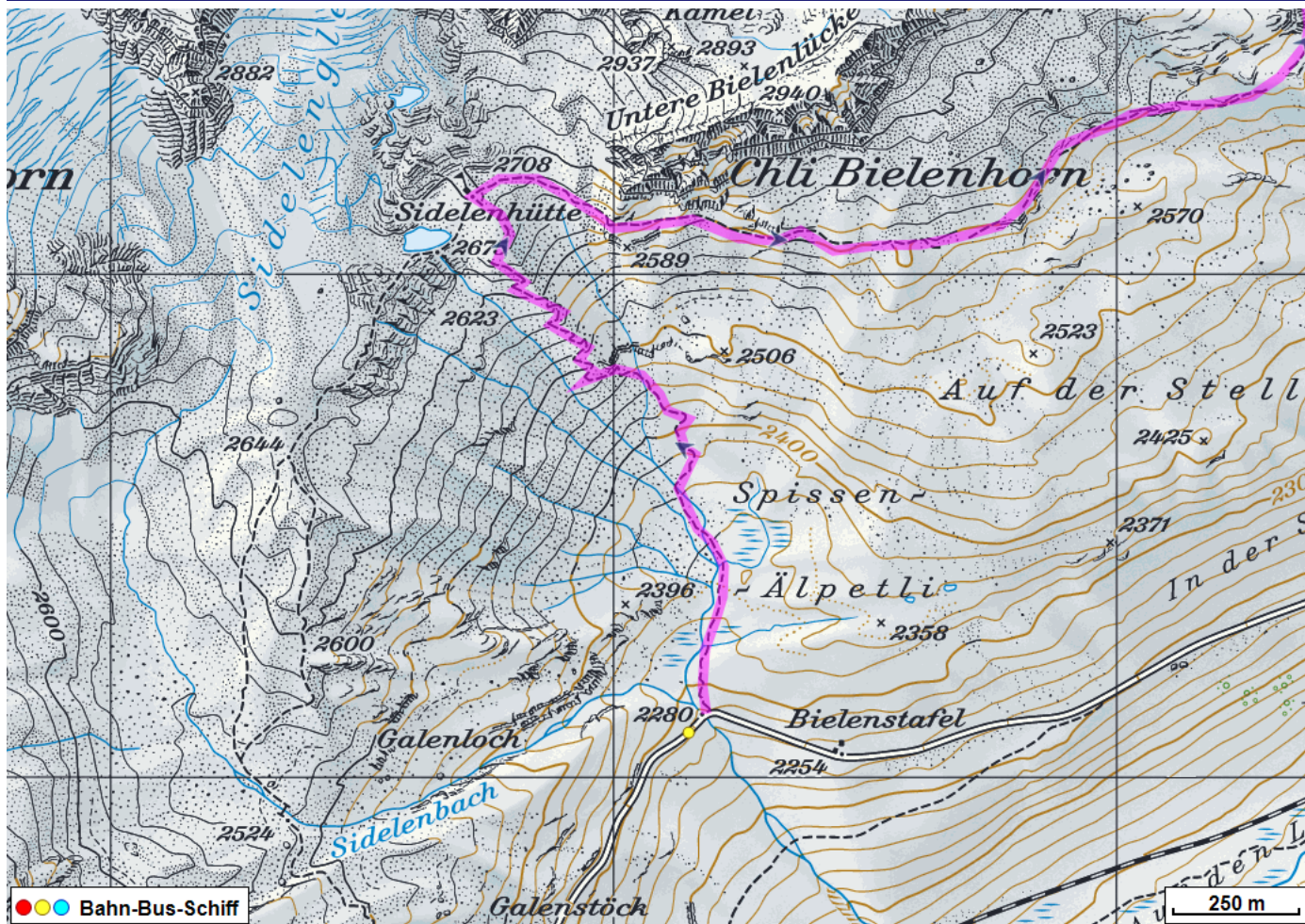
Höchster Punkt: 2707 m.ü.M.

Tourenbeschreibung

Bergwanderung Sidelen Albert-Heim



Bergwanderung Sidelen Albert-Heim



Bergwanderung Sidelen Albert-Heim



Höhenprofil

