
Bergwanderung Campo Tencia Airolo



Distanz: 20.7 km

Zeitbedarf: 6½ h

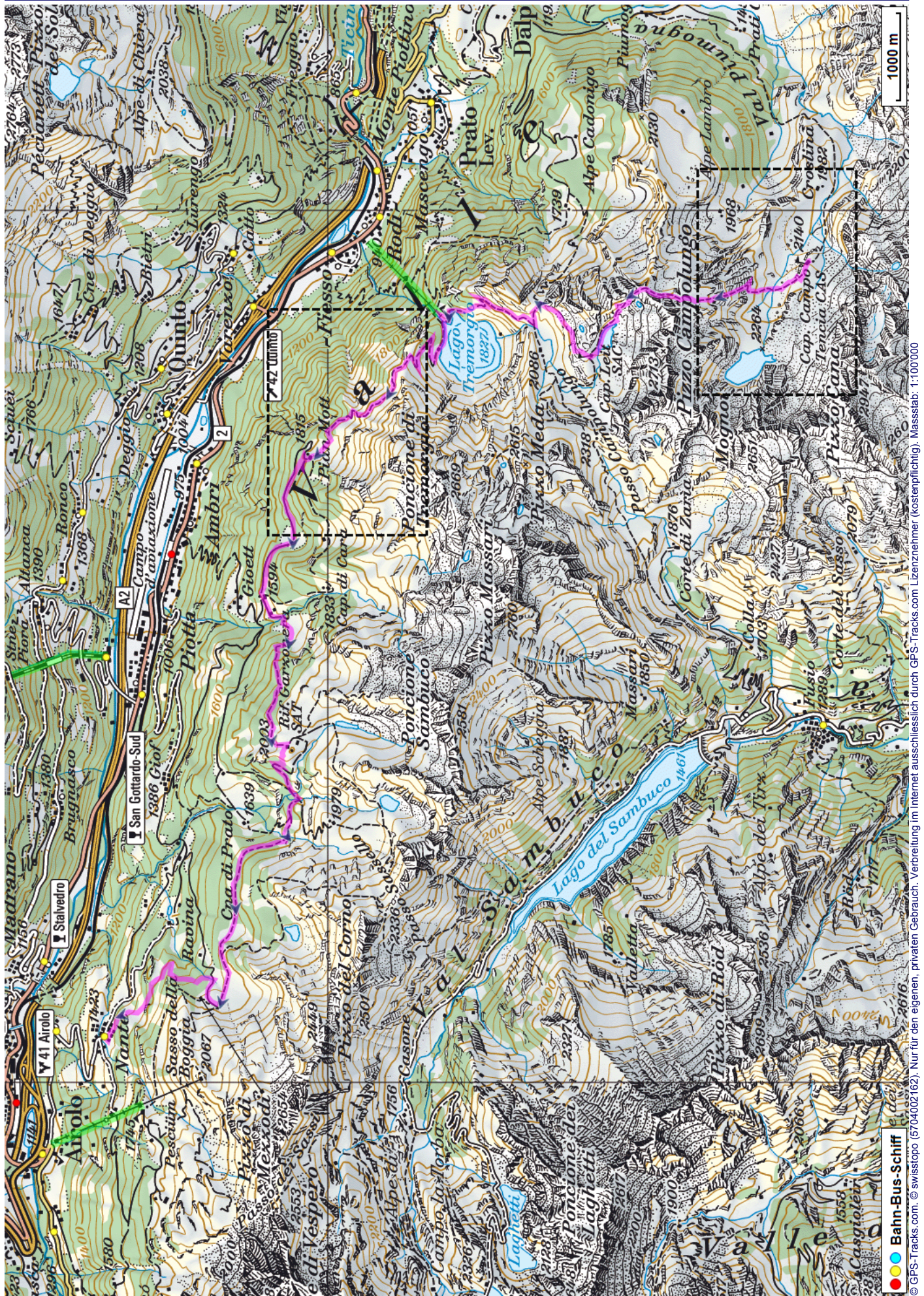
Aufstieg: 1230 m

Abstieg: 1945 m

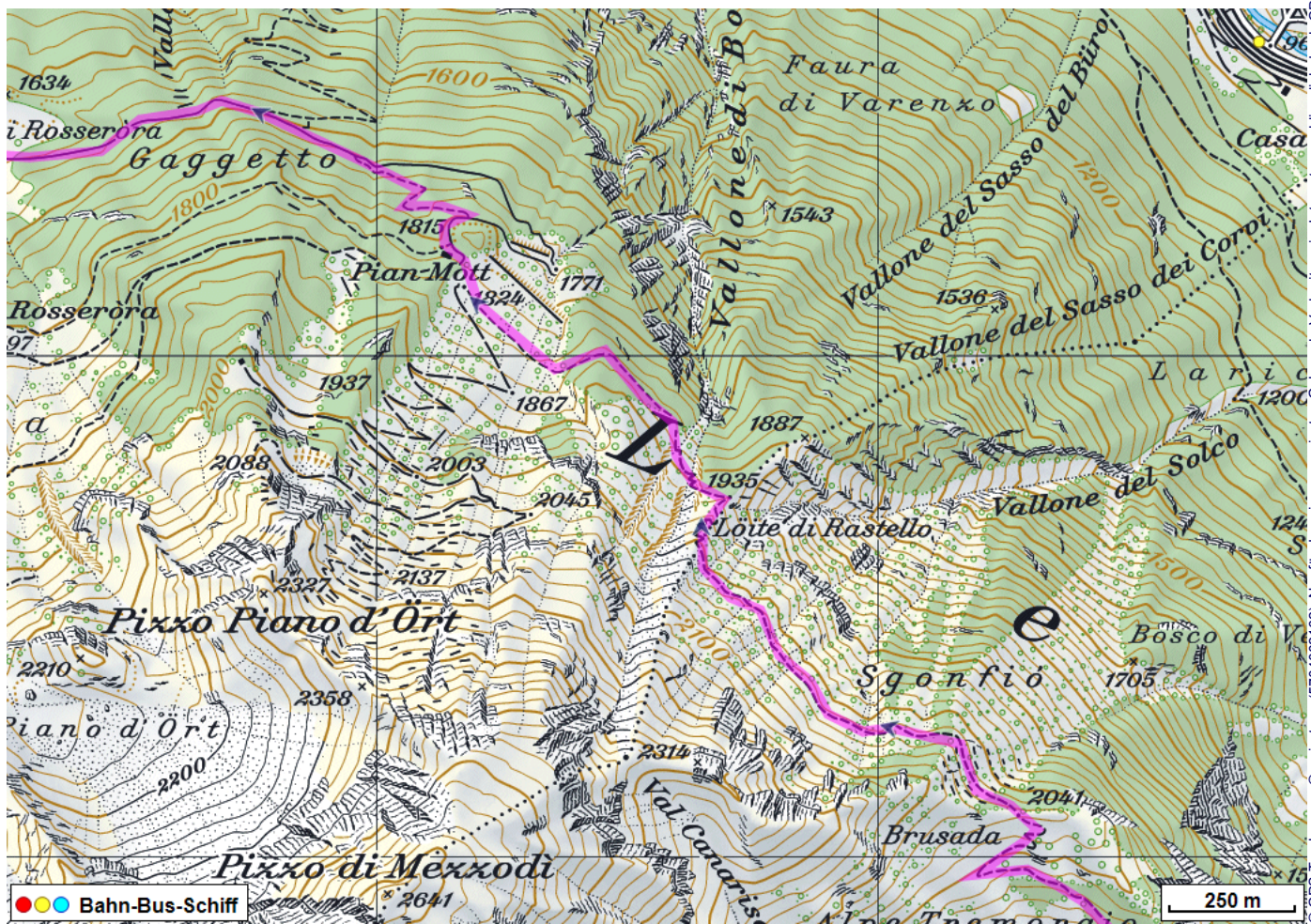
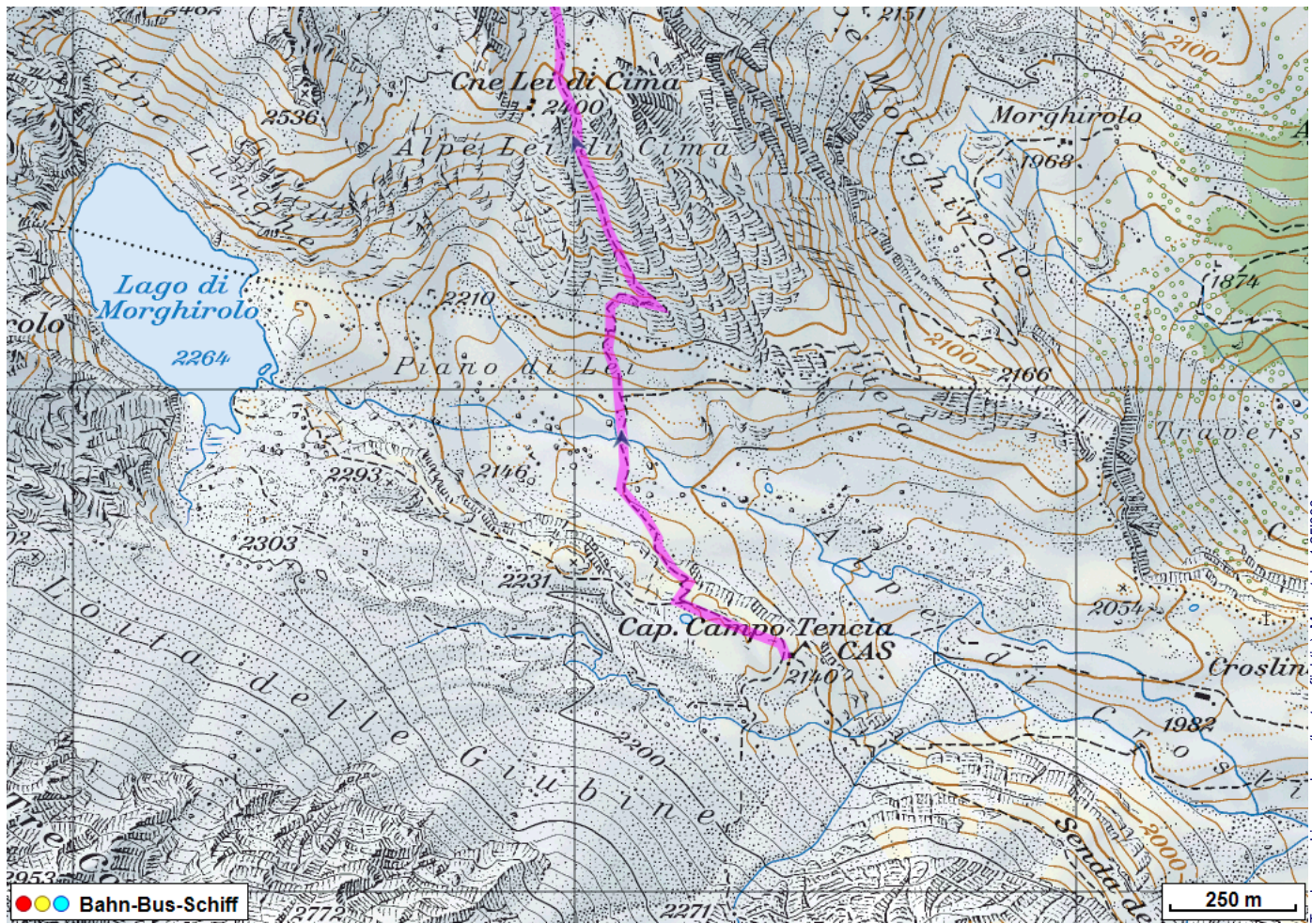
Höchster Punkt: 2480 m.ü.M.

Tourenbeschreibung

Bergwanderung Campo Tencia Airolo



Bergwanderung Campo Tencia Airolo



Bergwanderung Campo Tencia Airolo



Höhenprofil

