
Wanderung Parpaner Rothorn



Distanz: 14.6 km

Zeitbedarf: 5 h

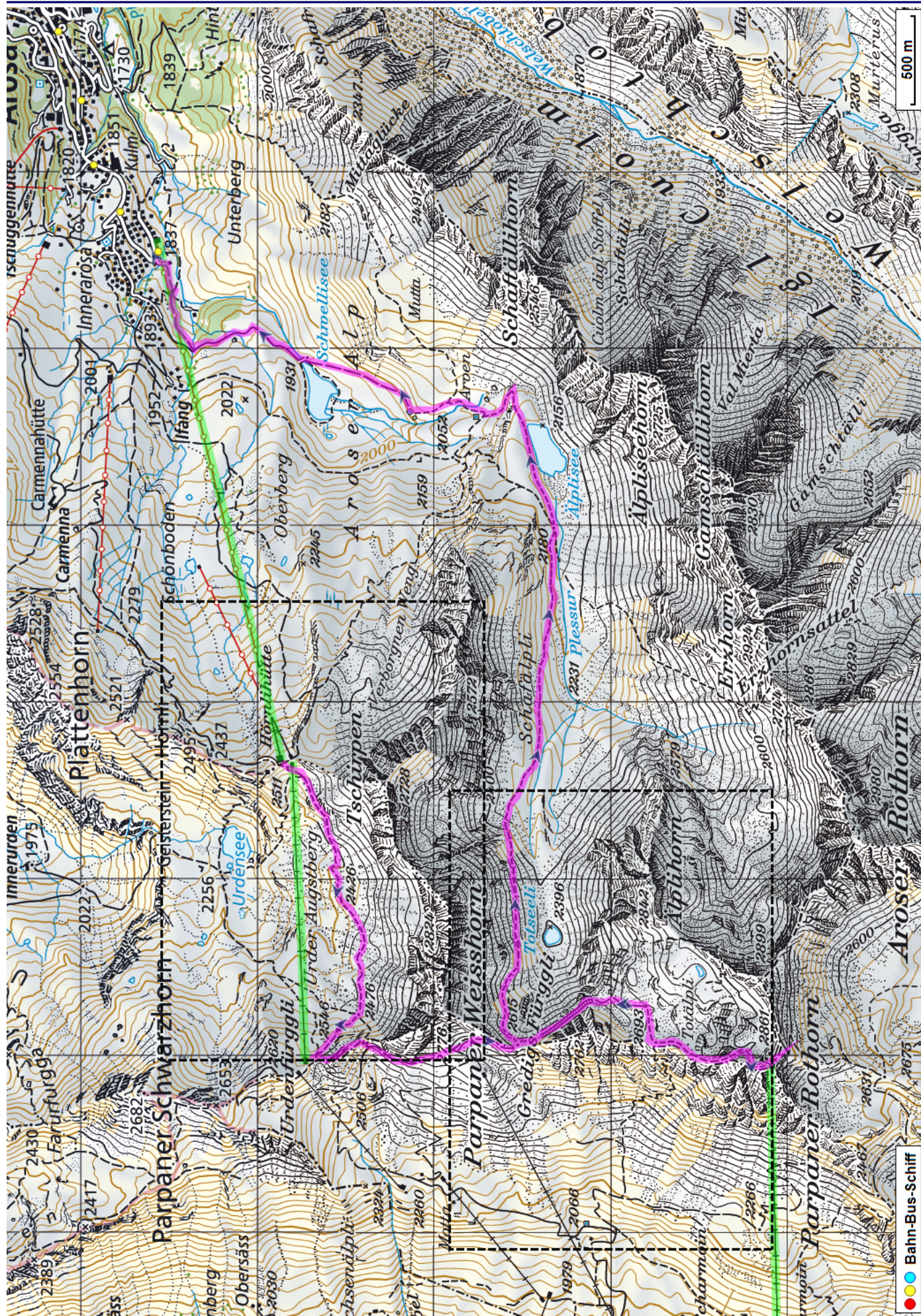
Aufstieg: 755 m

Abstieg: 1420 m

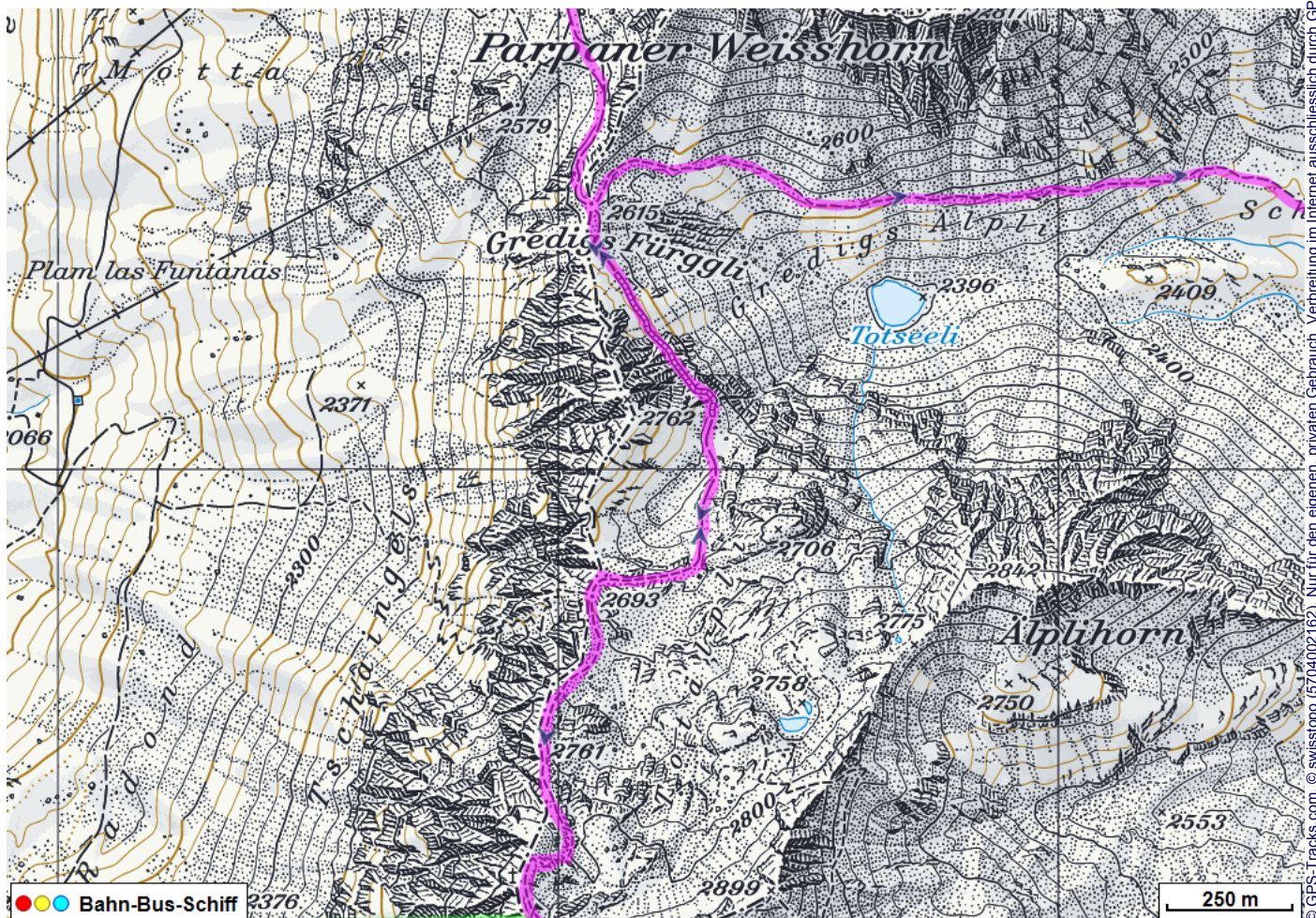
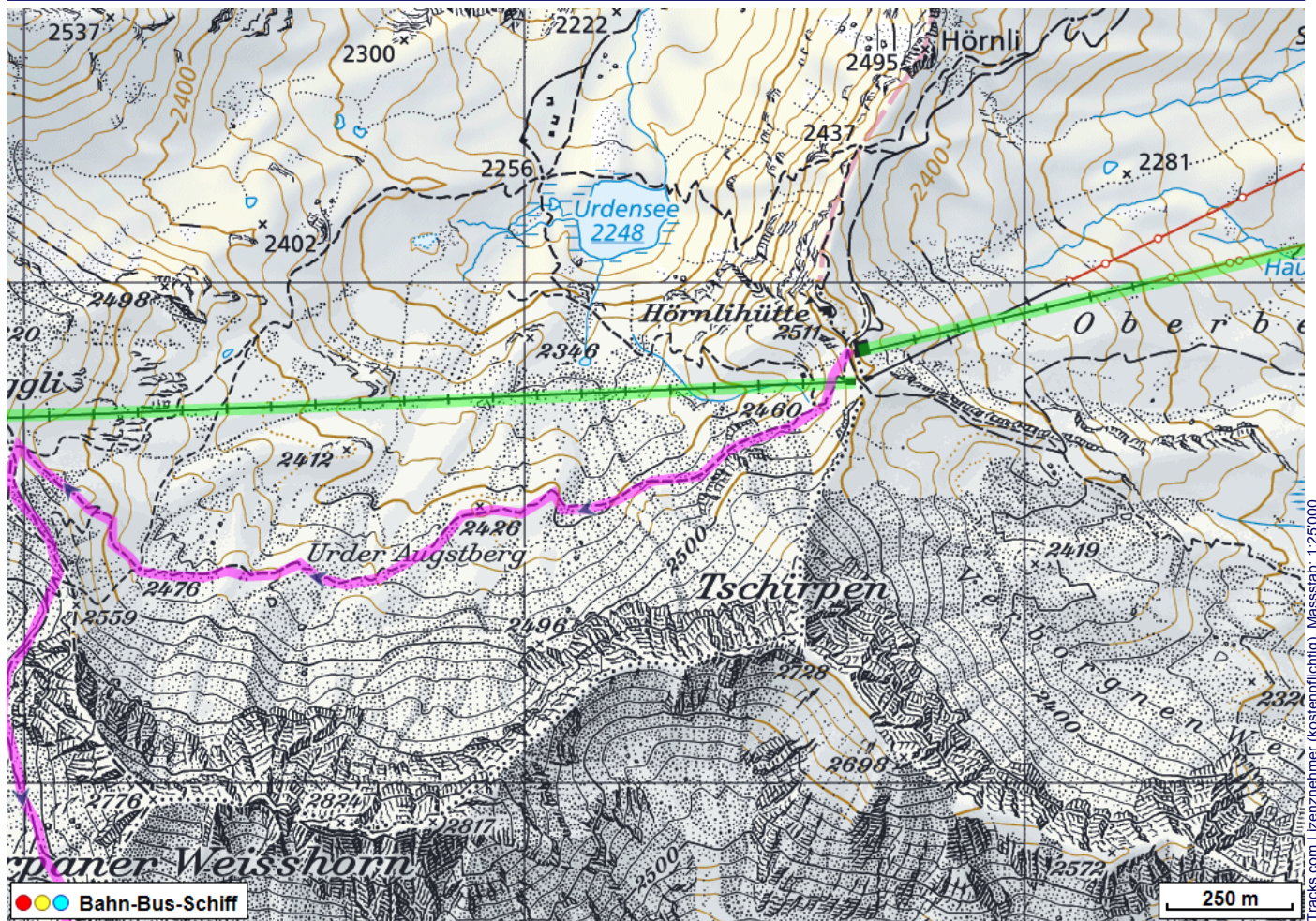
Höchster Punkt: 2861 m.ü.M.

Tourenbeschreibung

Wanderung Parpaner Rothorn



Wanderung Parpaner Rothorn



Wanderung Parpaner Rothorn



Höhenprofil

