
Bergtour Gehrihorn Rüederigsgrat



Distanz: 12 km

Zeitbedarf: 5 h

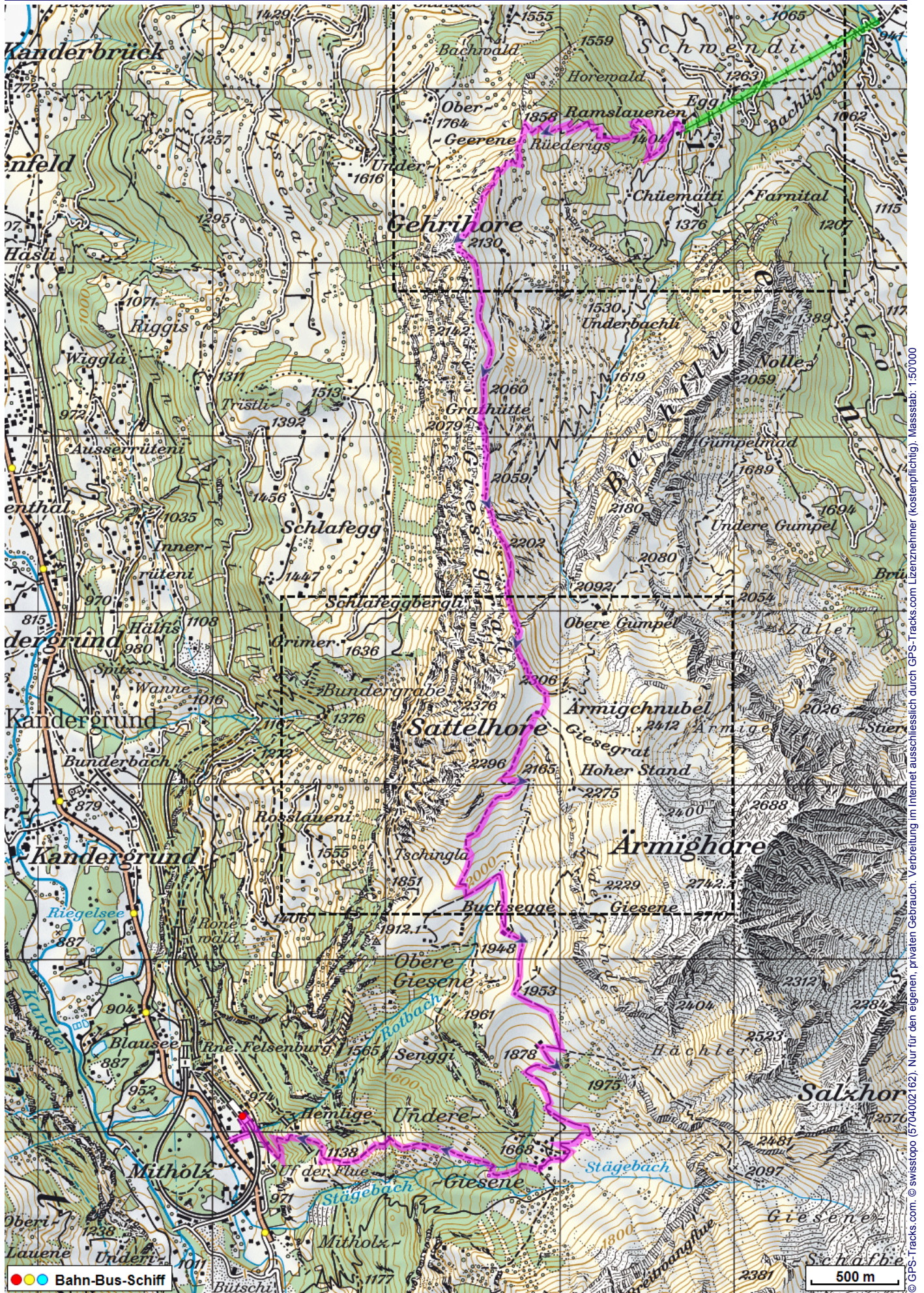
Aufstieg: 1070 m

Abstieg: 1490 m

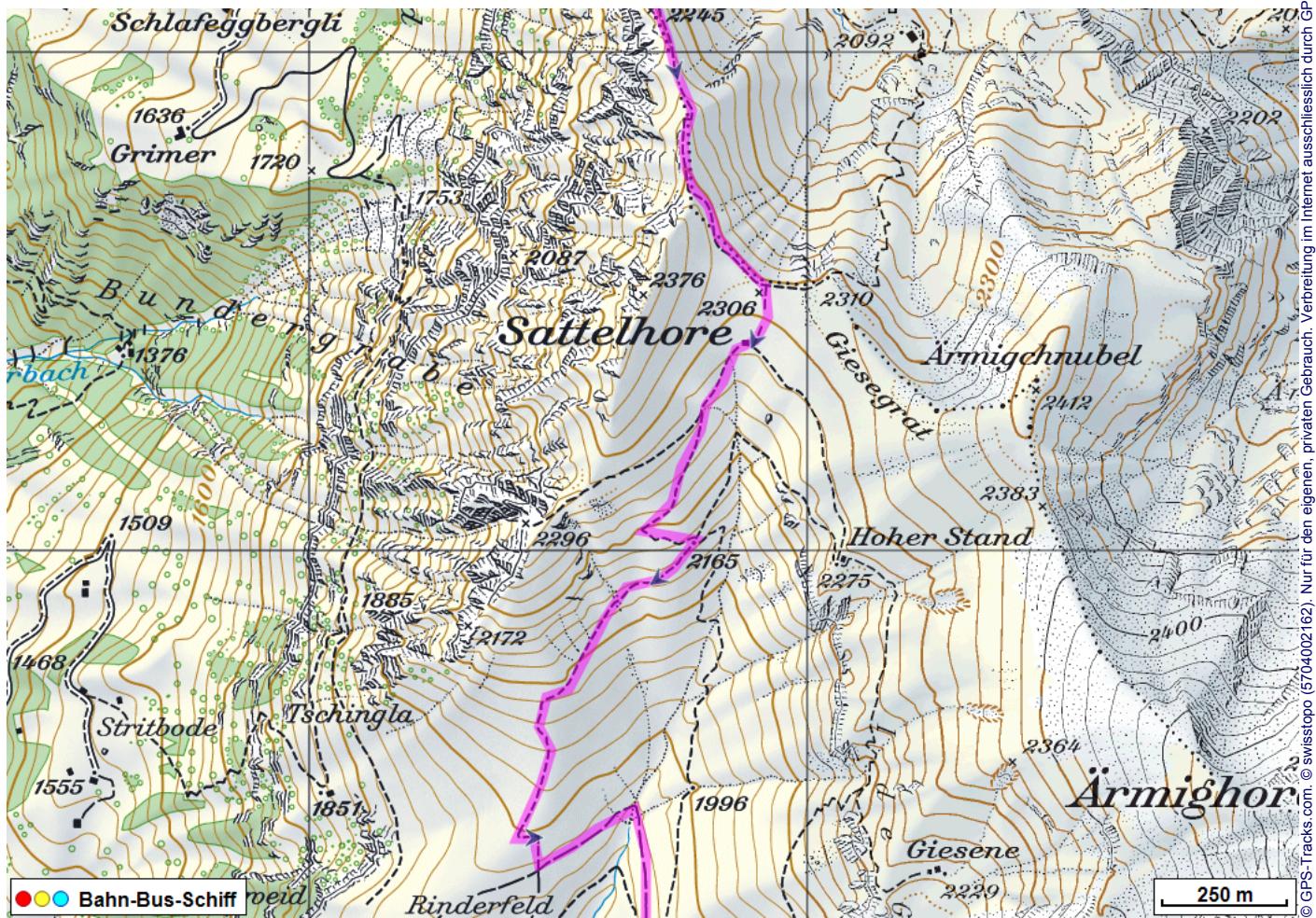
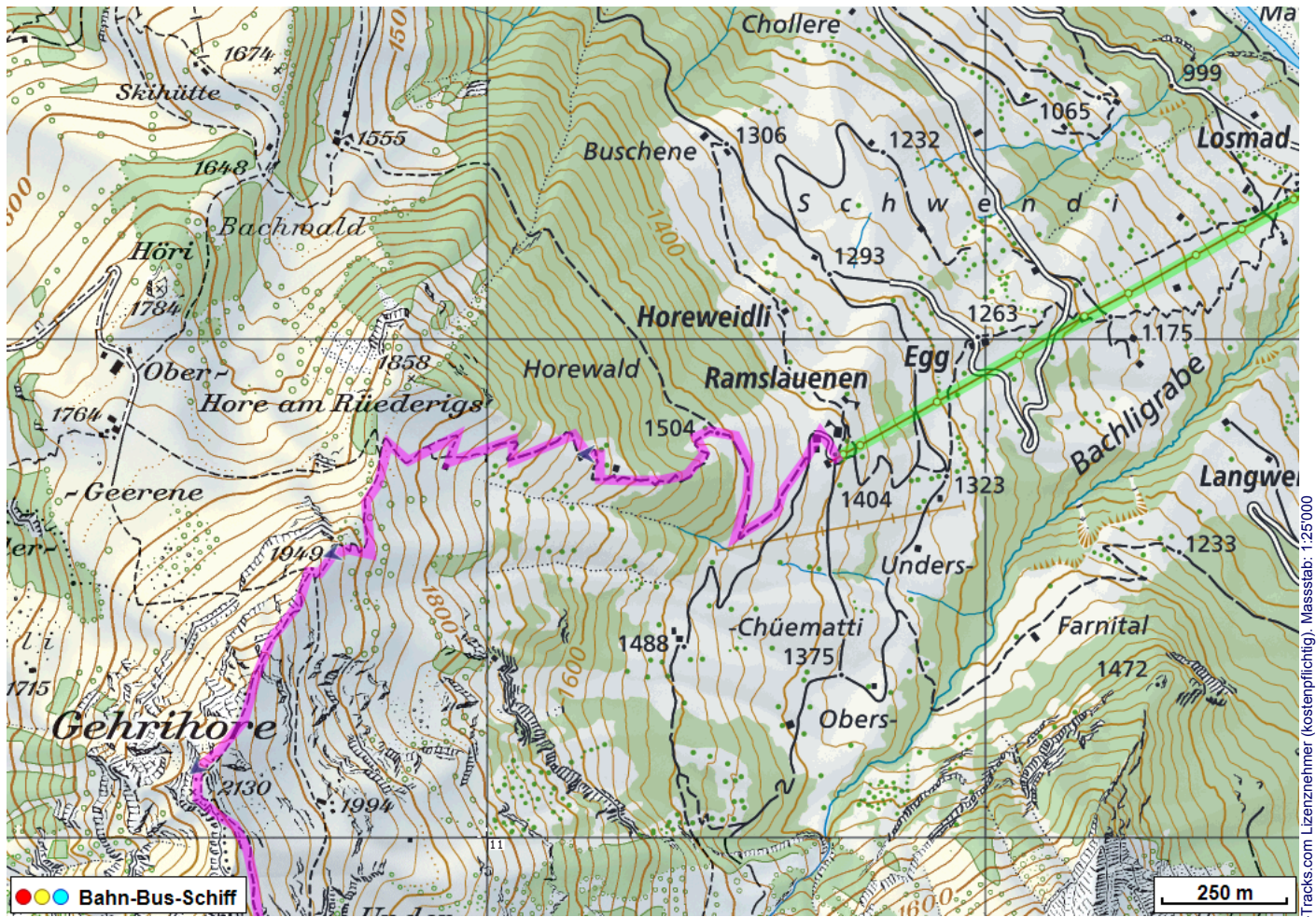
Höchster Punkt: 2306 m.ü.M.

Tourenbeschreibung

Bergtour Gehrihorn Rüederigsgrat



Bergtour Gehrihorn Rüederigrat



Bergtour Gehrihorn Rüederigsgrat



Höhenprofil

