

---

# Wildstrubeltour 2 Cabane des Violettes Leukerbad

---



**Distanz:** 20 km

**Zeitbedarf:** 6½ h

**Aufstieg:** 910 m

**Abstieg:** 1740 m

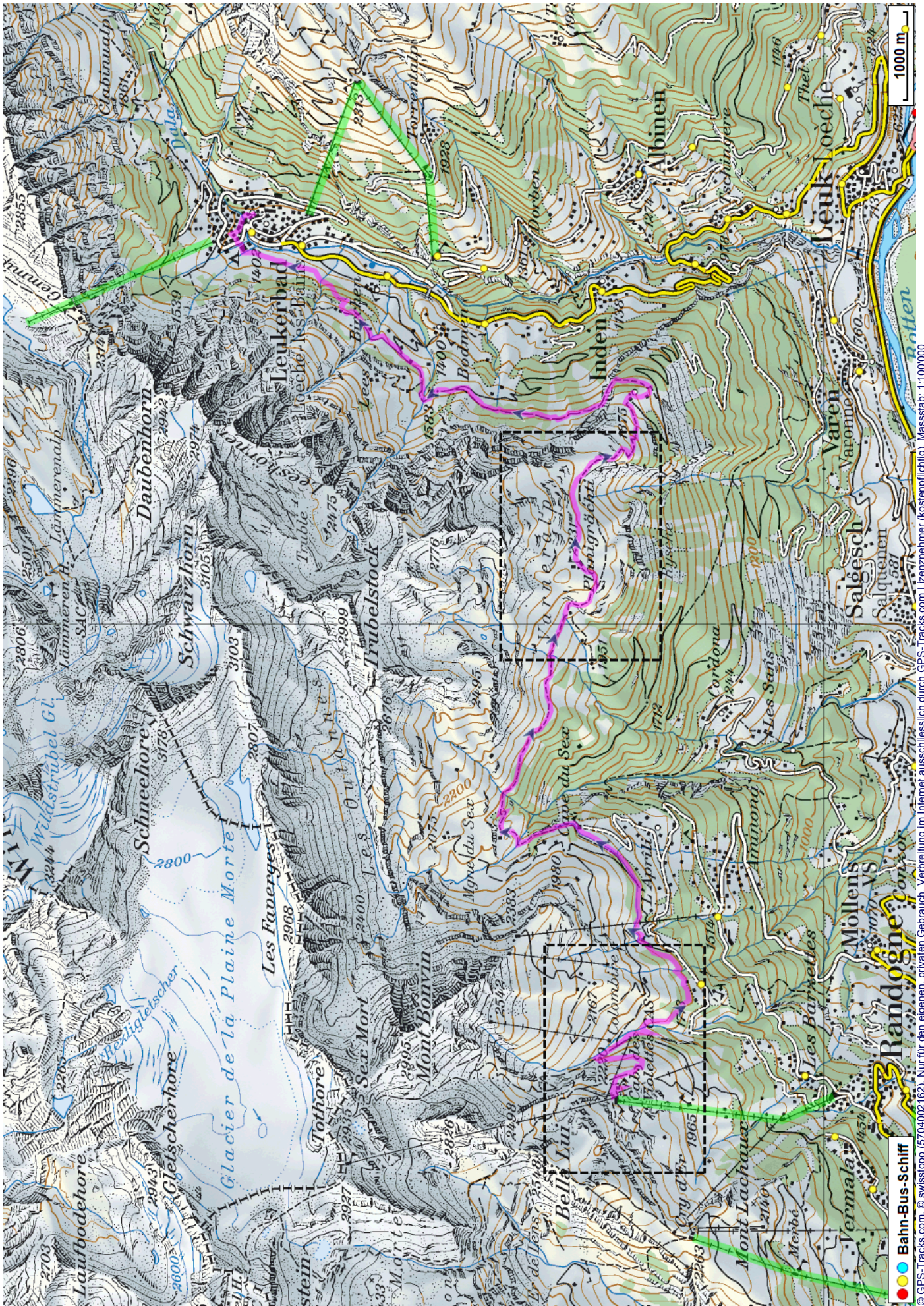
**Höchster Punkt:** 2231 m.ü.M.

---

## Tourenbeschreibung

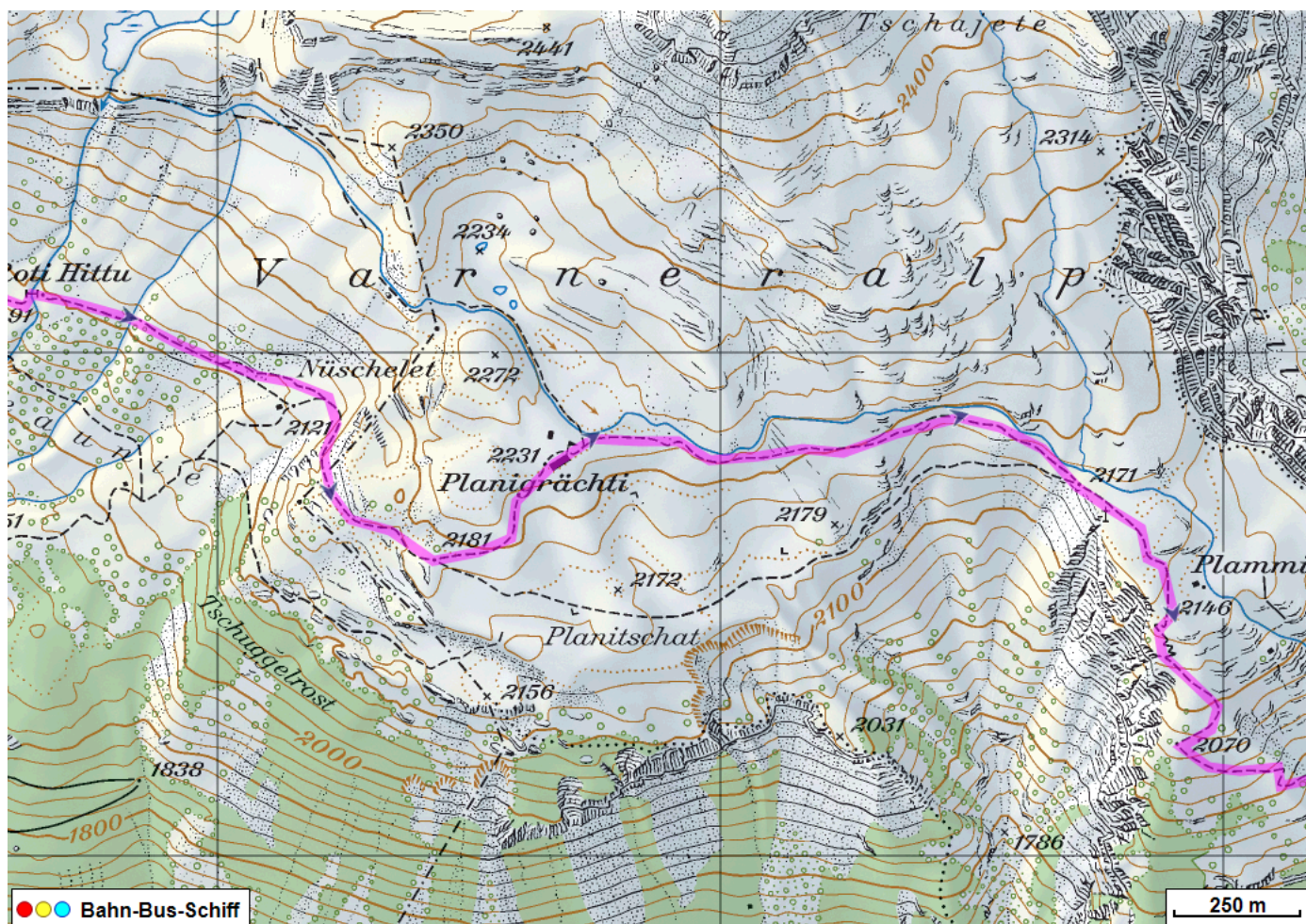
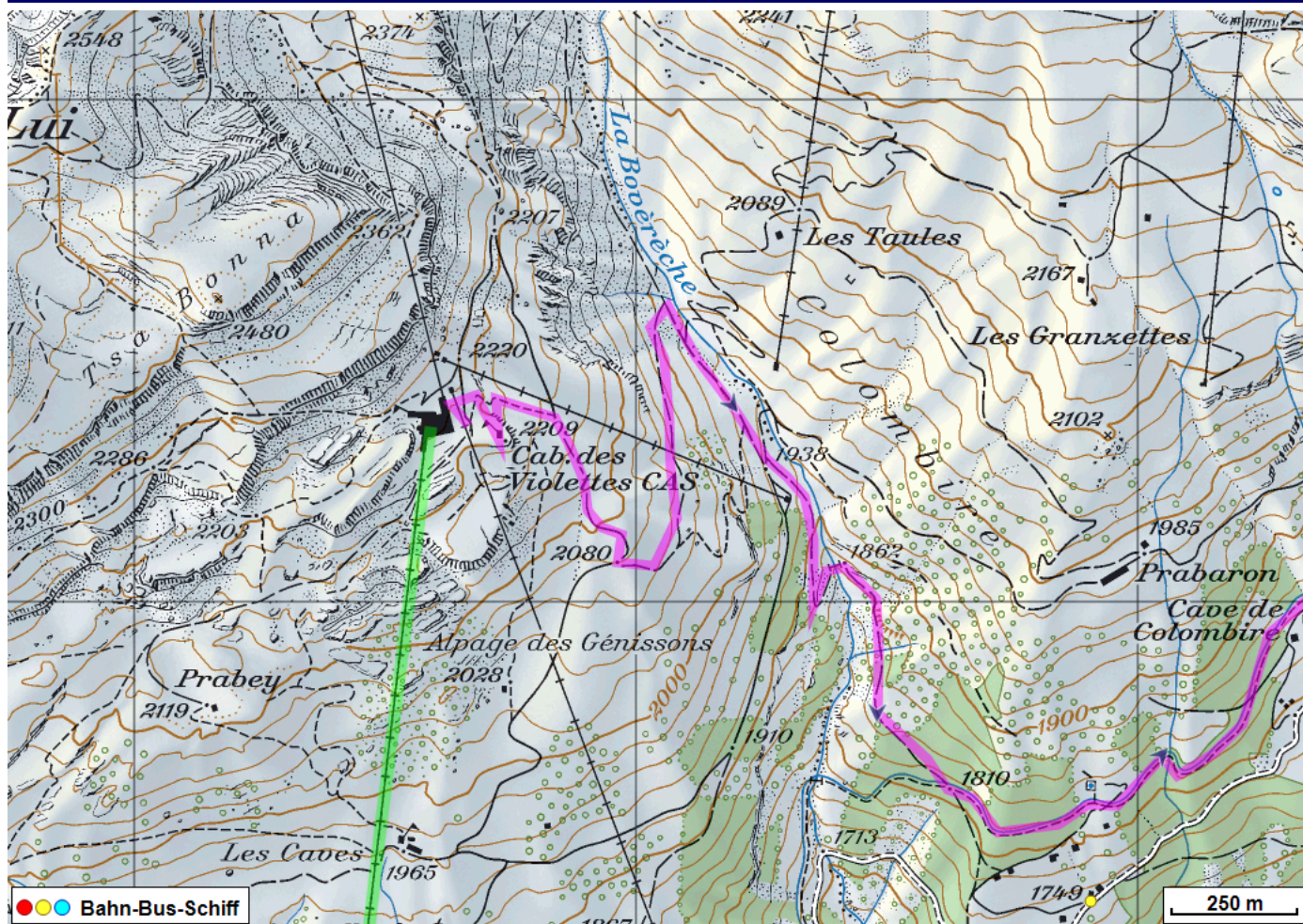


# Wildstrubeltour 2 Cabane des Violettes Leukerbad





# Wildstrubeltour 2 Cabane des Violettes Leukerbad





# Wildstrubeltour 2 Cabane des Violettes Leukerbad



## Höhenprofil

