
Bergwanderung Salmone



Distanz: 11.2 km

Zeitbedarf: 5 h

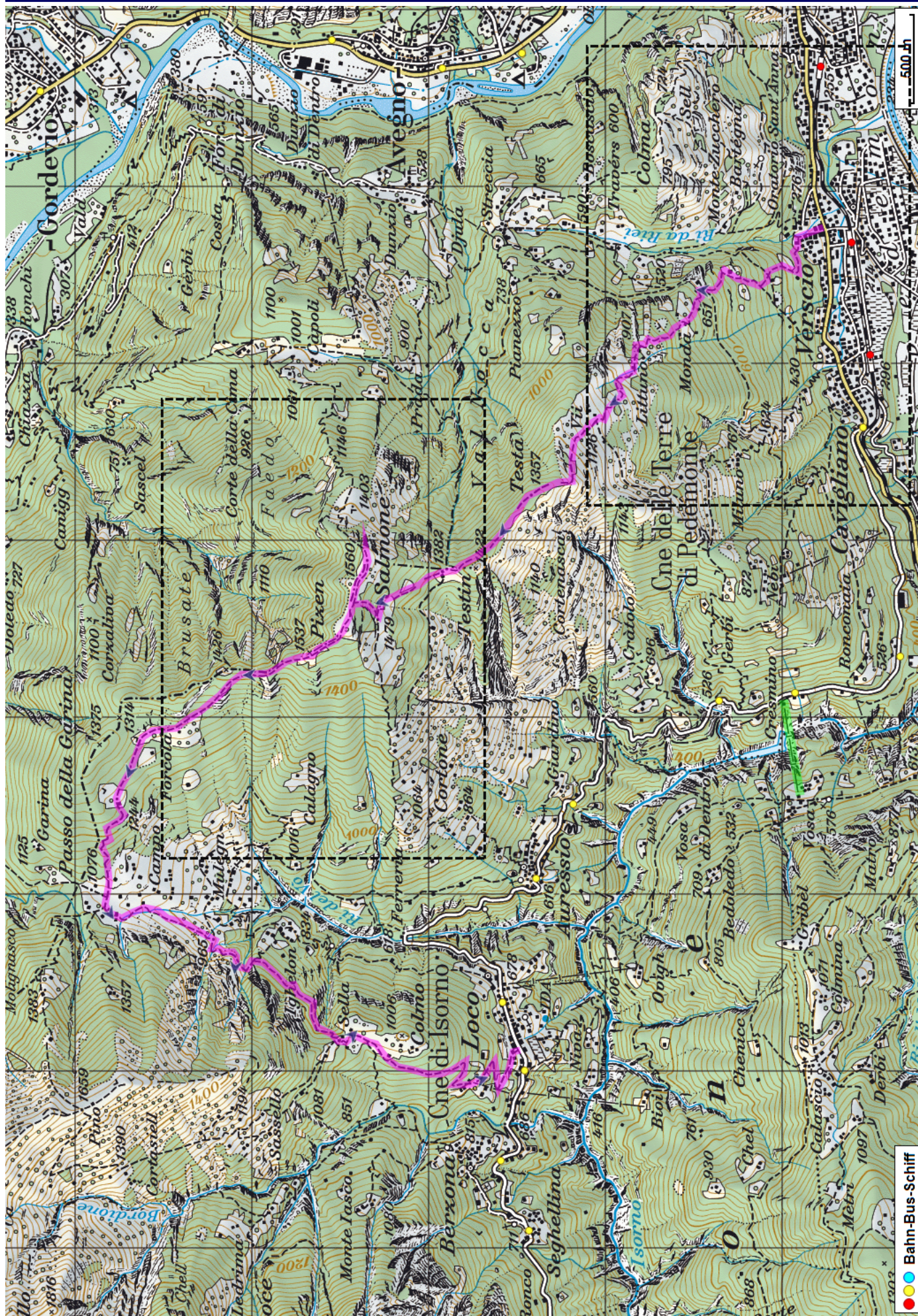
Aufstieg: 1475 m

Abstieg: 1080 m

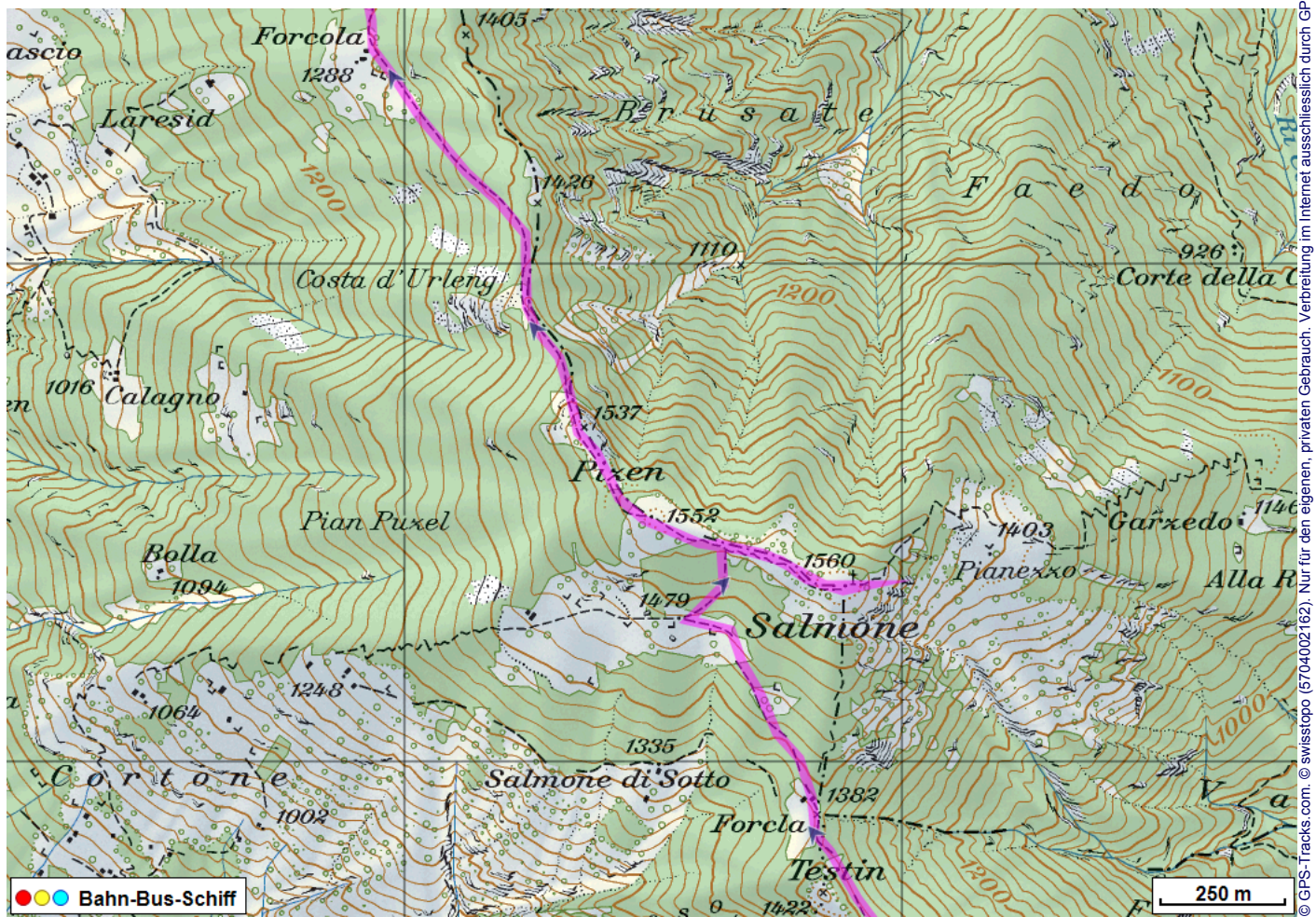
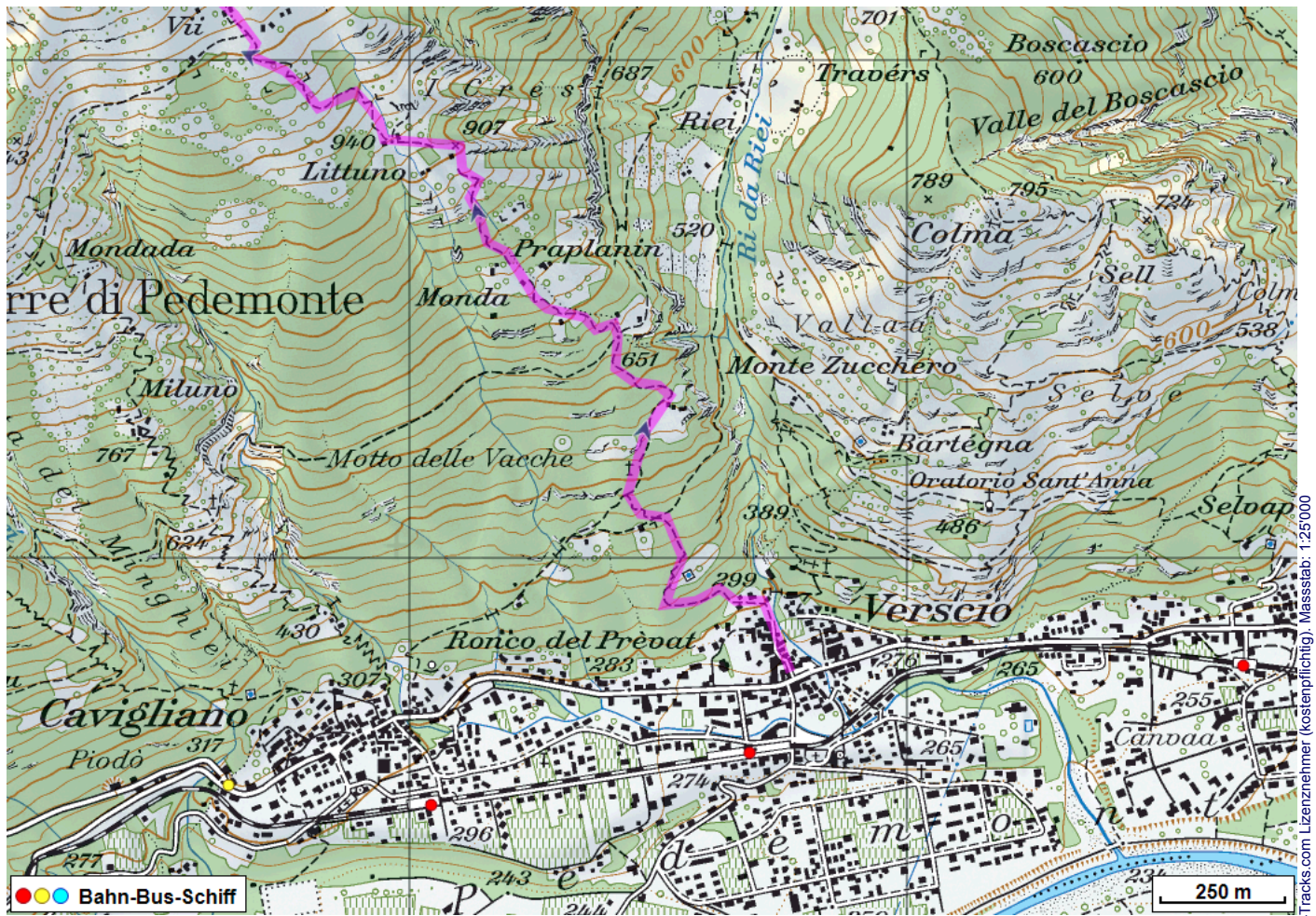
Höchster Punkt: 1559 m.ü.M.

Tourenbeschreibung

Bergwanderung Salmone



Bergwanderung Salmone



Bergwanderung Salmone



Höhenprofil

