

---

# Bergtour Oberrothorn 4 Seen Riffelalp

---



**Distanz:** 14.6 km

**Zeitbedarf:** 4¼ h

**Aufstieg:** 595 m

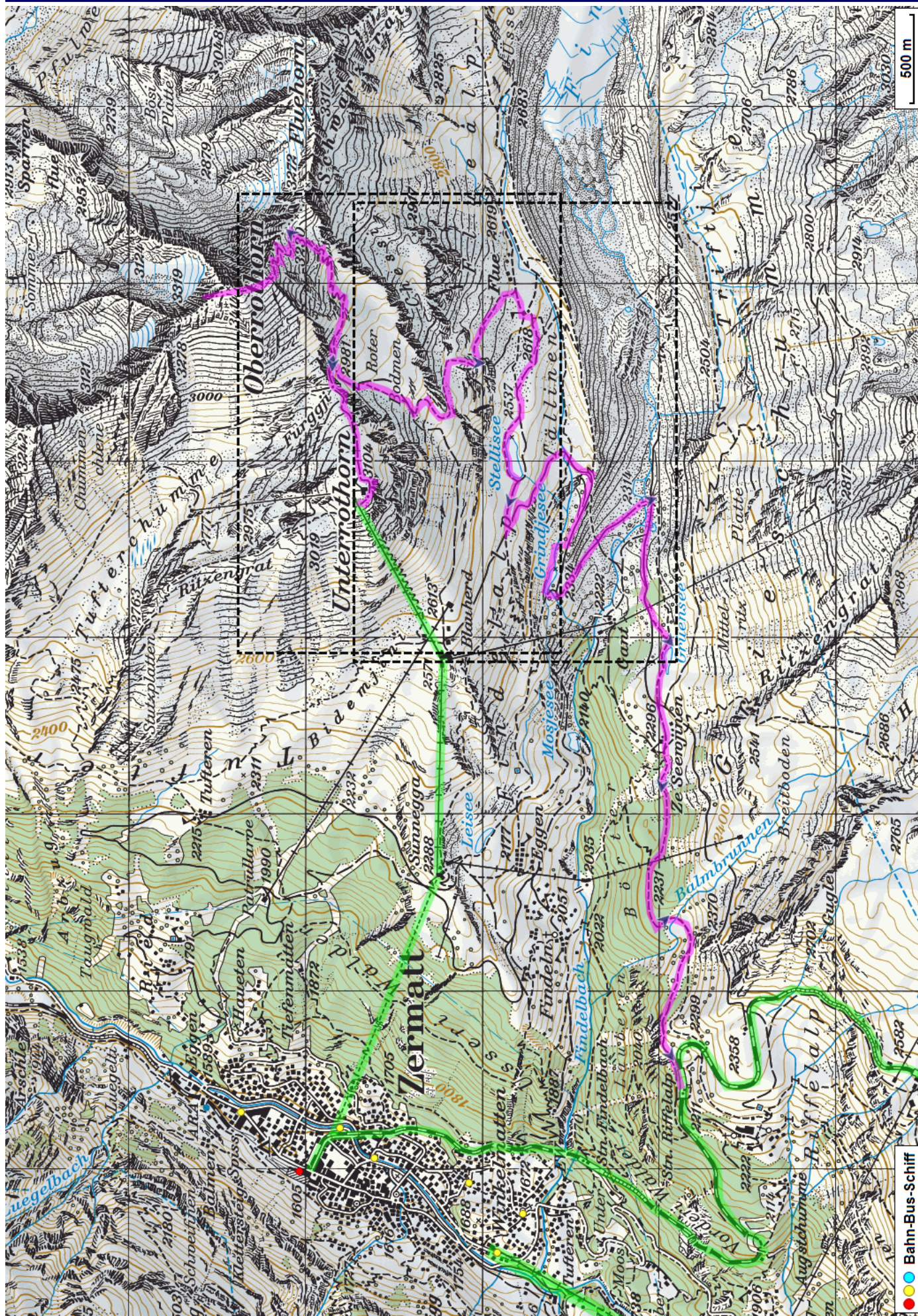
**Abstieg:** 1490 m

**Höchster Punkt:** 3414 m.ü.M.

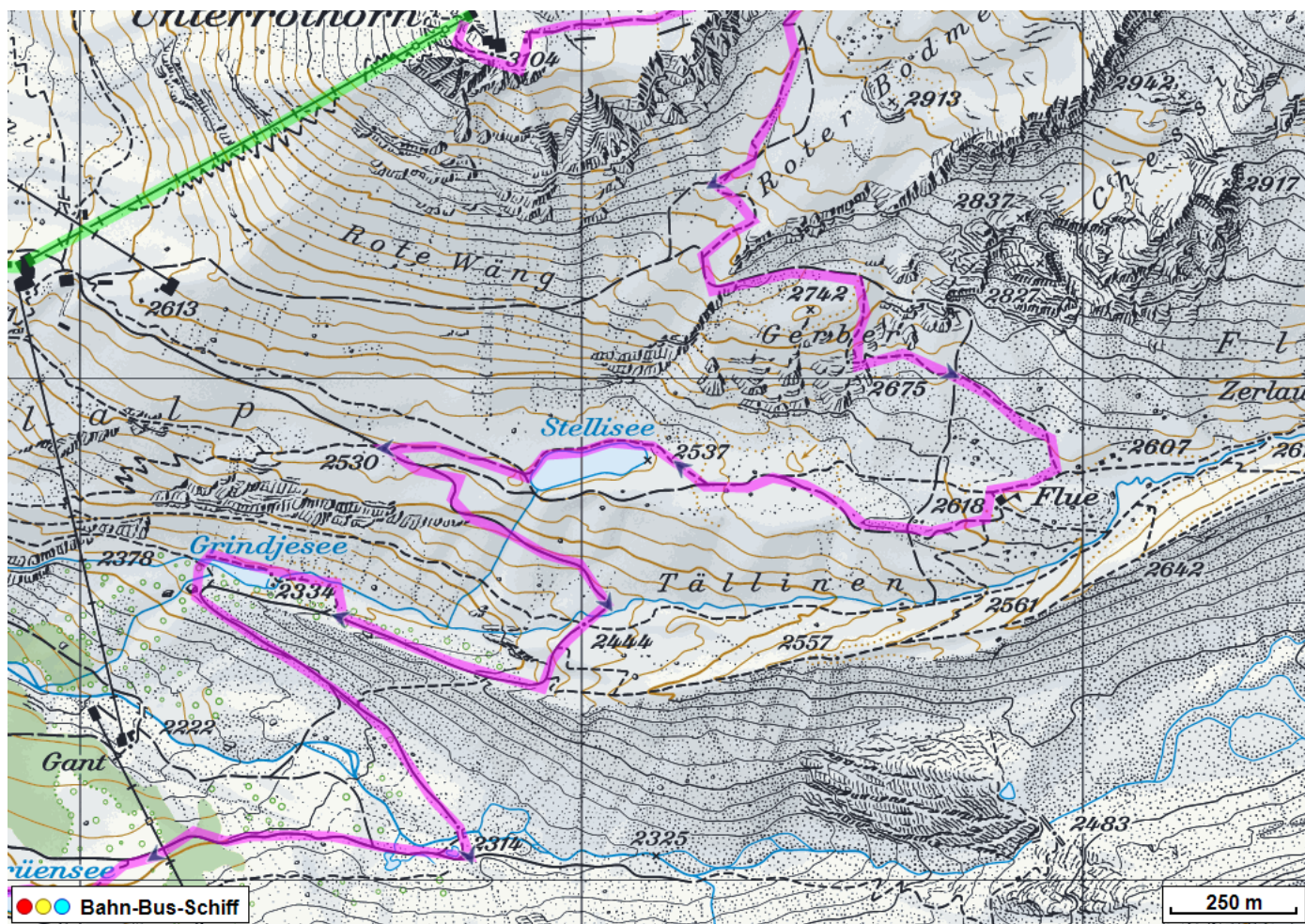
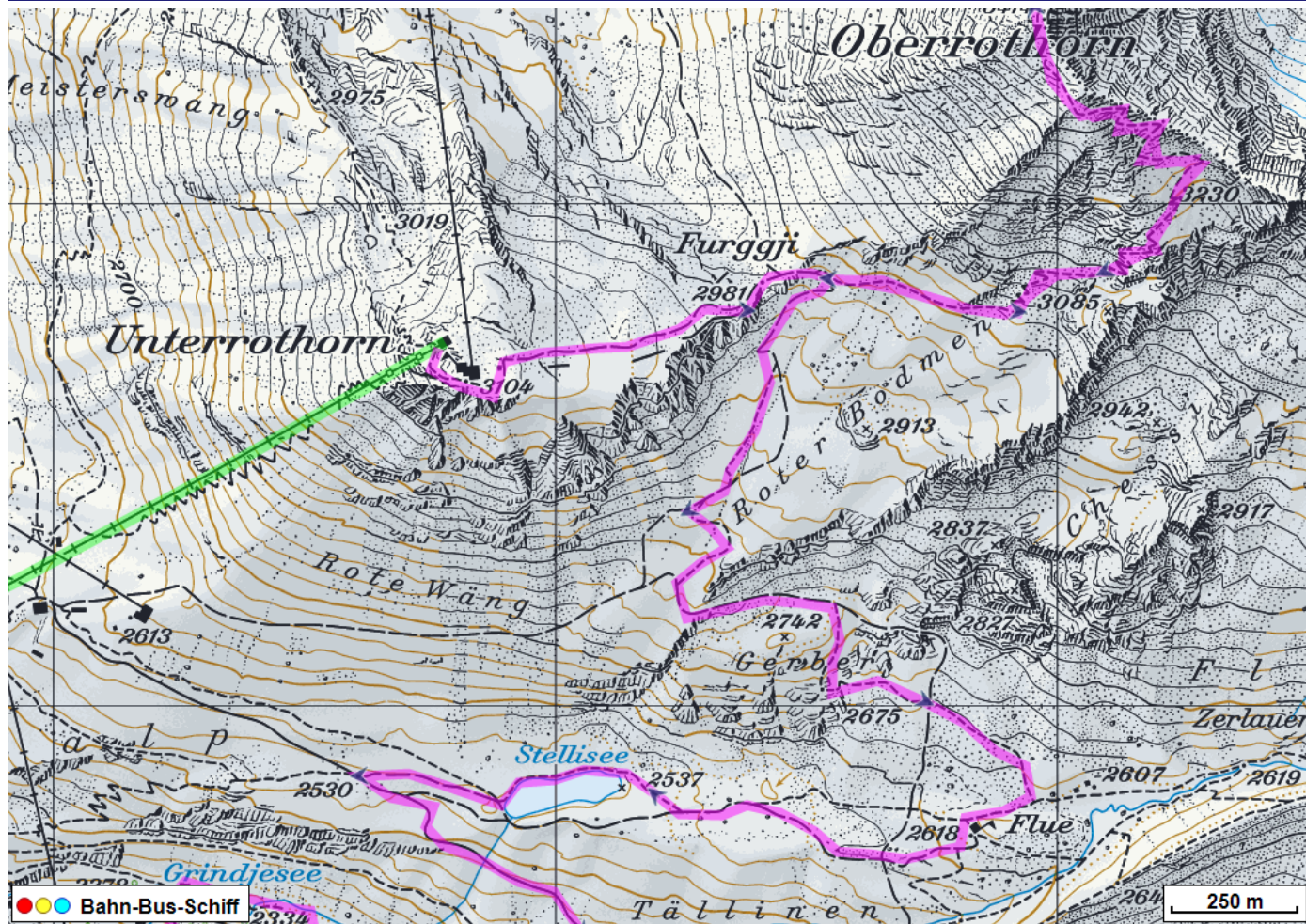
---

## Tourenbeschreibung

# Bergtour Oberrothorn 4 Seen Riffelalp



# Bergtour Oberrothorn 4 Seen Riffelalp



# Bergtour Oberrothorn 4 Seen Riffelalp



## Höhenprofil

