

---

# Bergwanderung Passo di Redòrta

---



**Distanz:** 13.5 km

**Zeitbedarf:** 6<sup>3</sup>/<sub>4</sub> h

**Aufstieg:** 1460 m

**Abstieg:** 1990 m

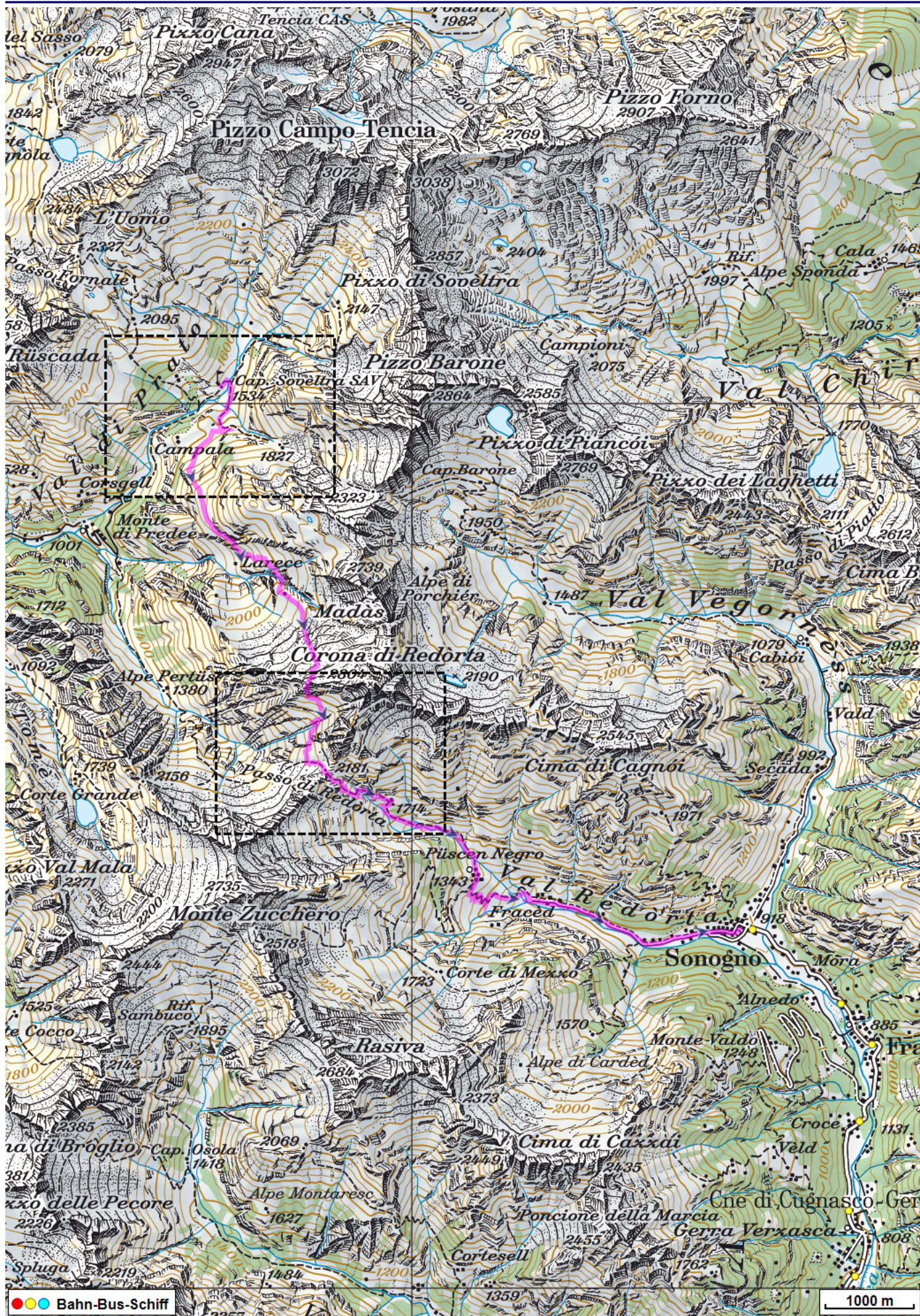
**Höchster Punkt:** 2585 m.ü.M.

---

## Tourenbeschreibung

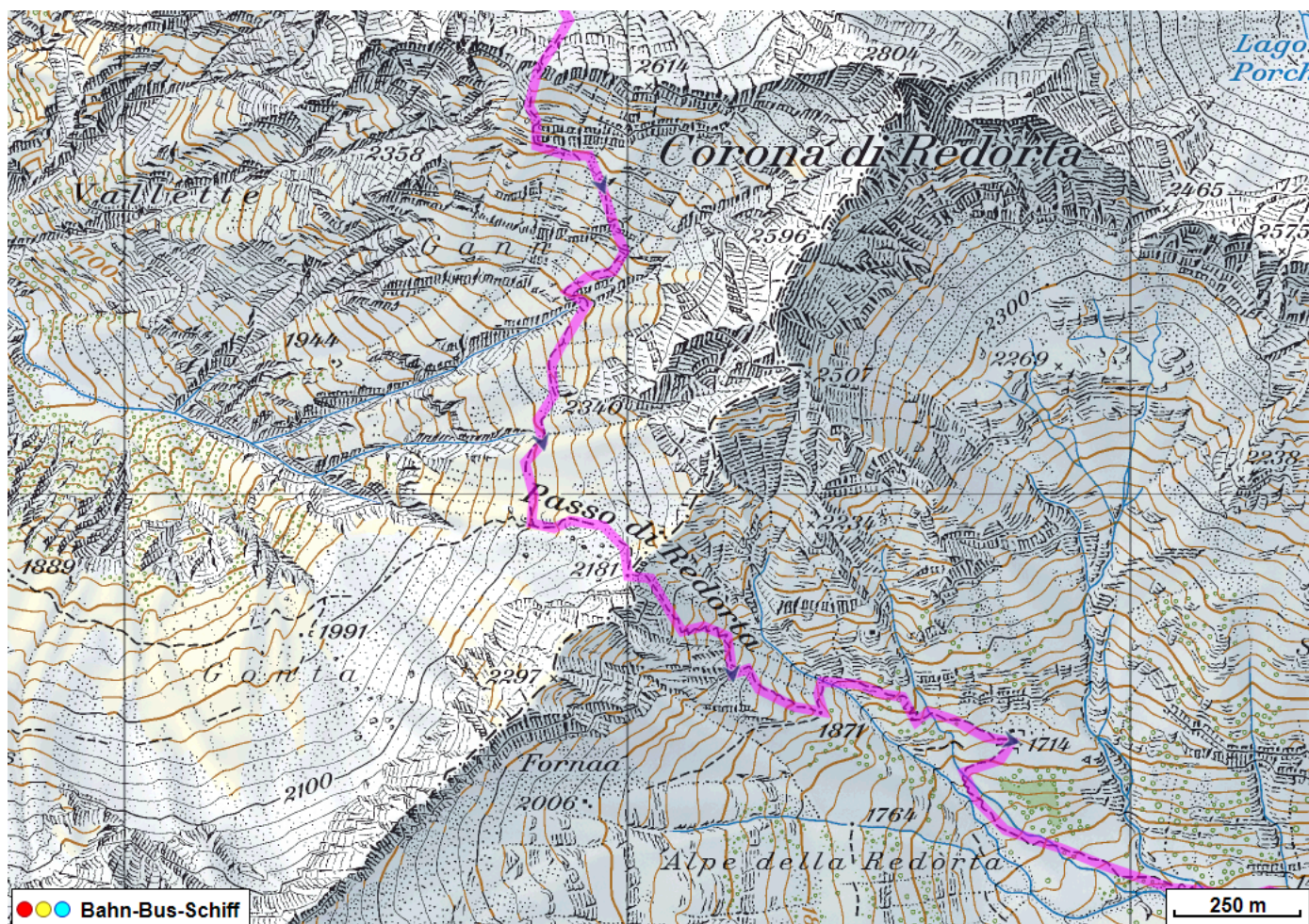
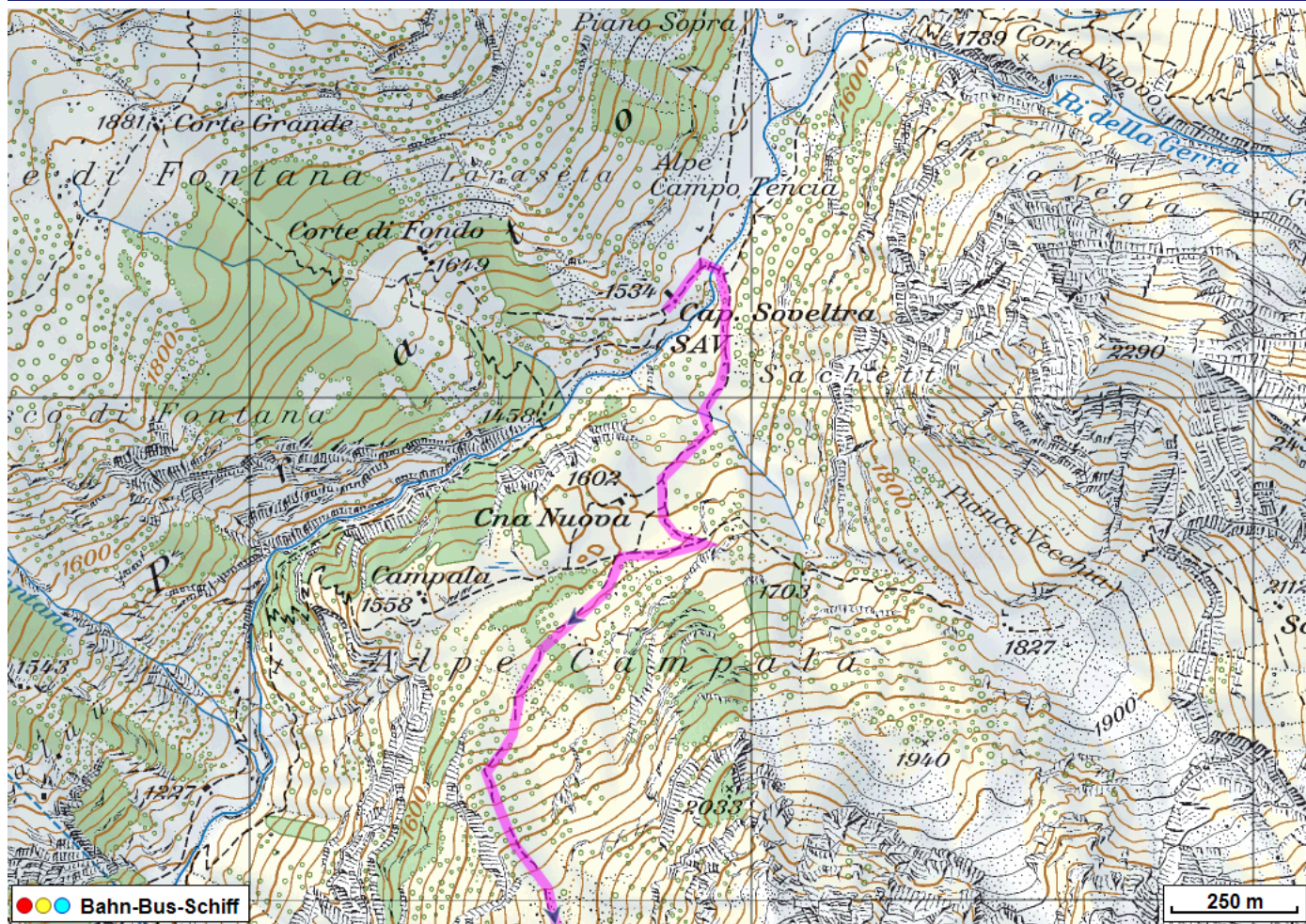


# Bergwanderung Passo di Redòrta





# Bergwanderung Passo di Redòrta





# Bergwanderung Passo di Redòrta



## Höhenprofil

