
Bergtour Le Moléson – Teysachaux



Distanz: 9 km

Zeitbedarf: 4³/₄ h

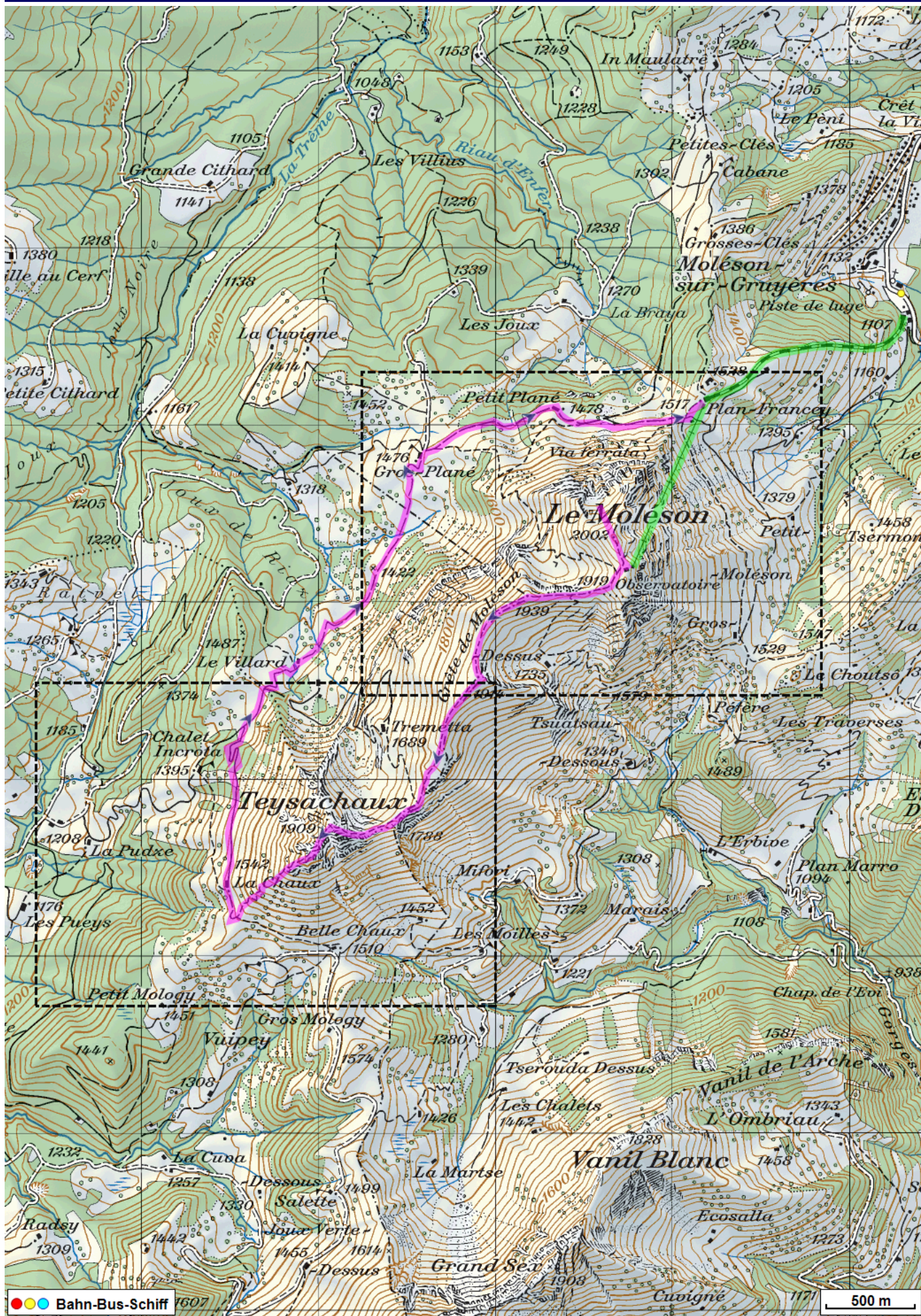
Aufstieg: 344 m

Abstieg: 804 m

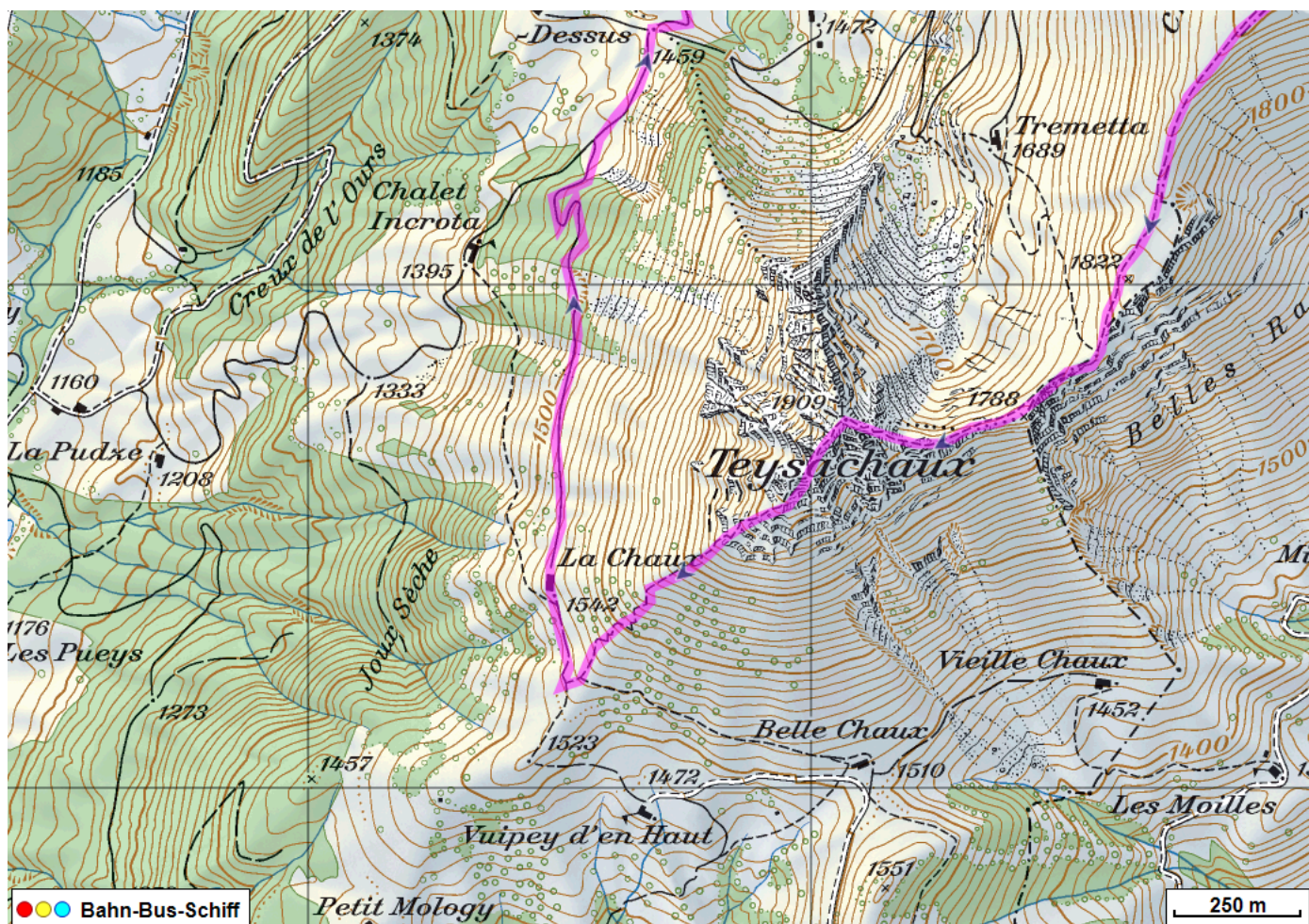
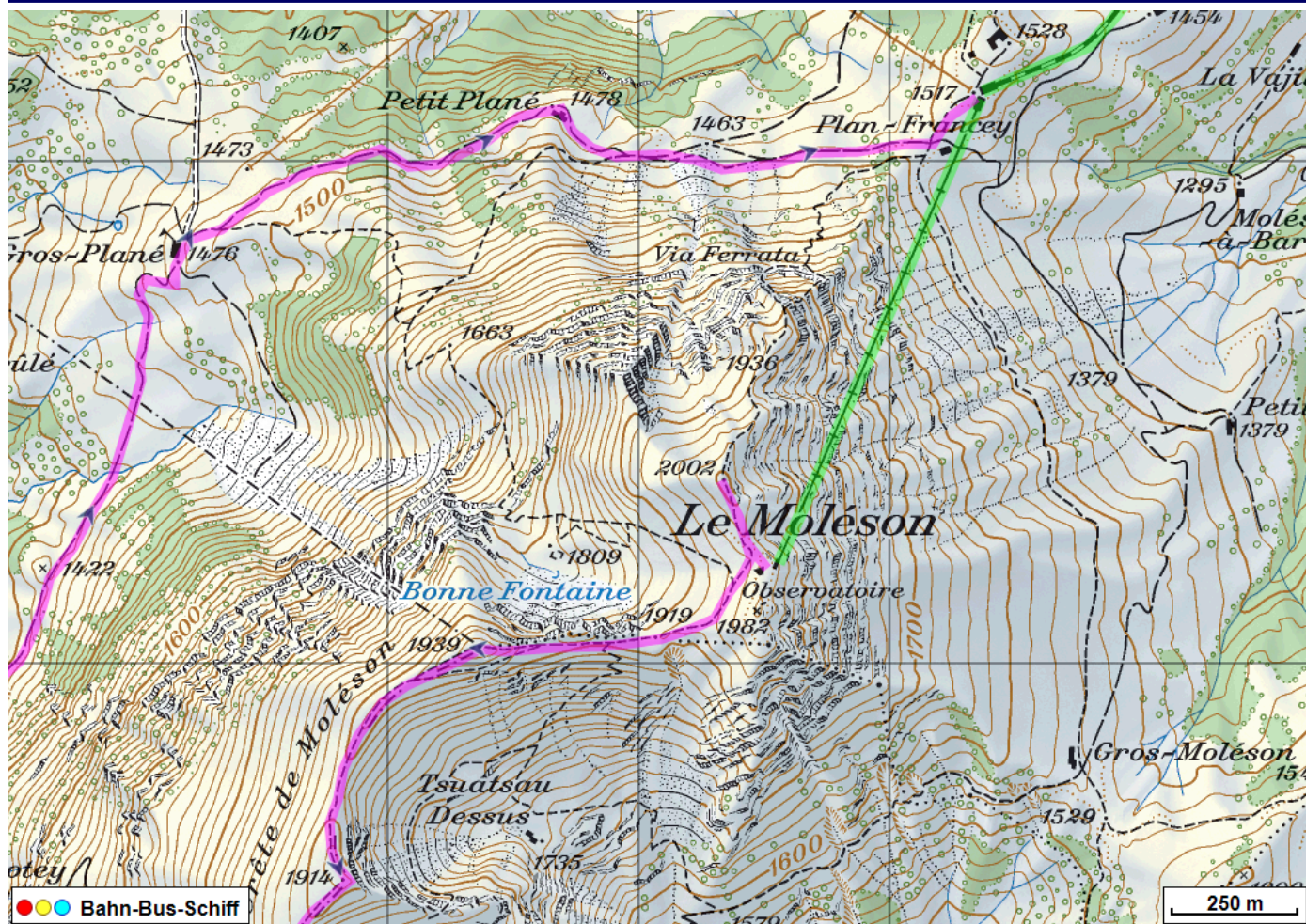
Höchster Punkt: 1997 m.ü.M.

Tourenbeschreibung

Bergtour Le Moléson – Teysachaux



Bergtour Le Moléson – Teysachaux



Bergtour Le Moléson – Teysachaux



Höhenprofil

