
Bergwanderung Topalihütte Randa



Distanz: 12 km

Zeitbedarf: 4¼ h

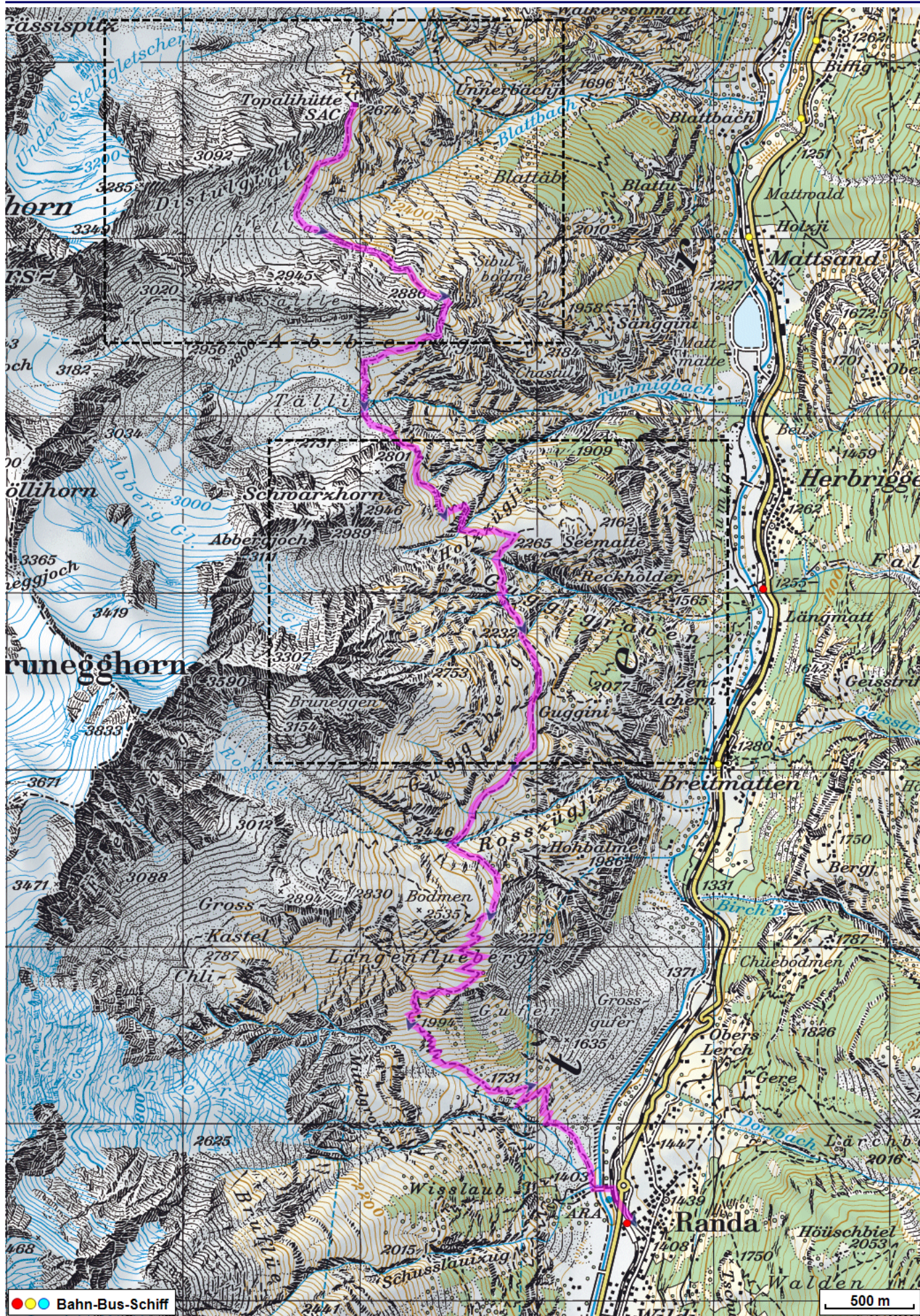
Aufstieg: 610 m

Abstieg: 1870 m

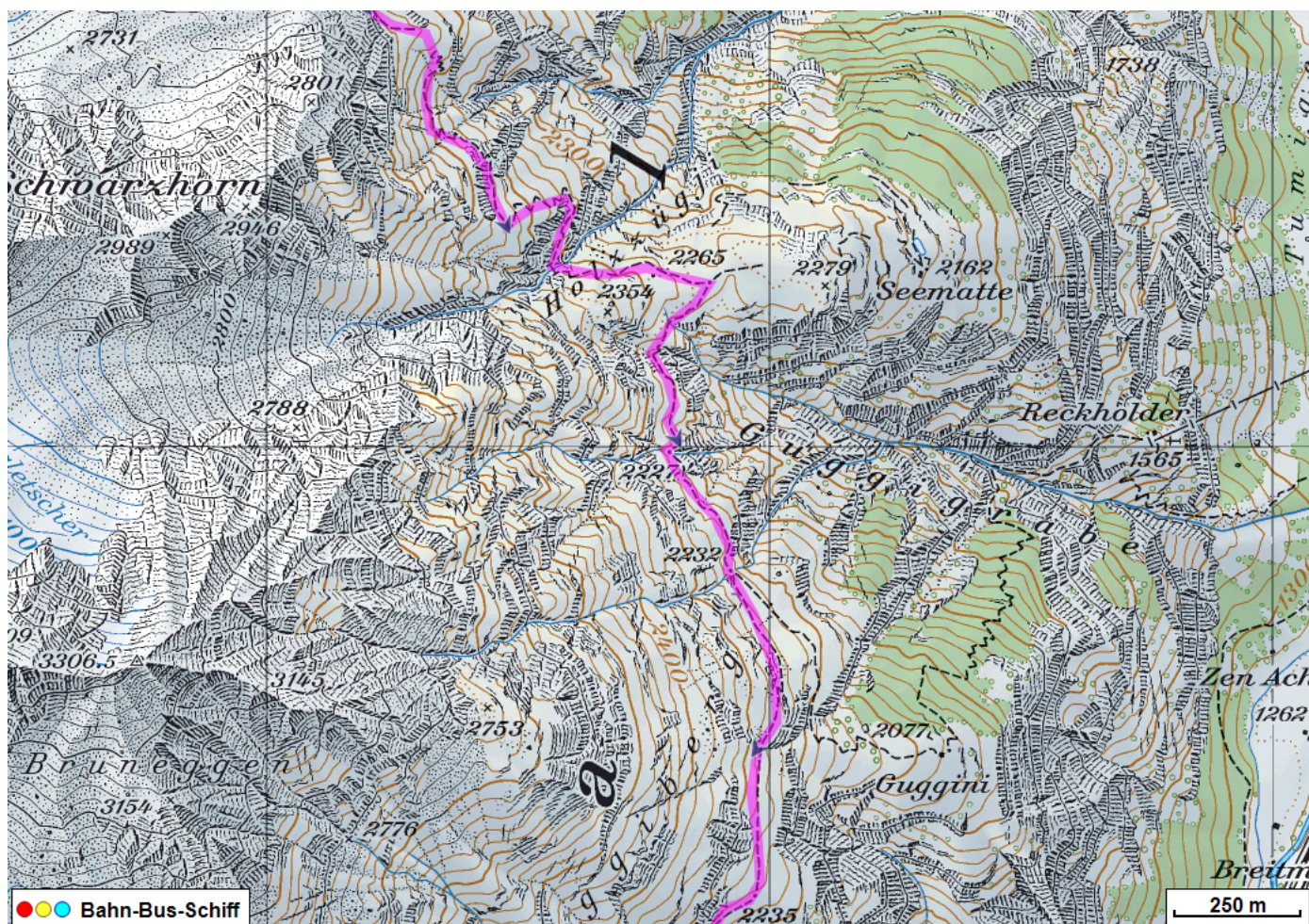
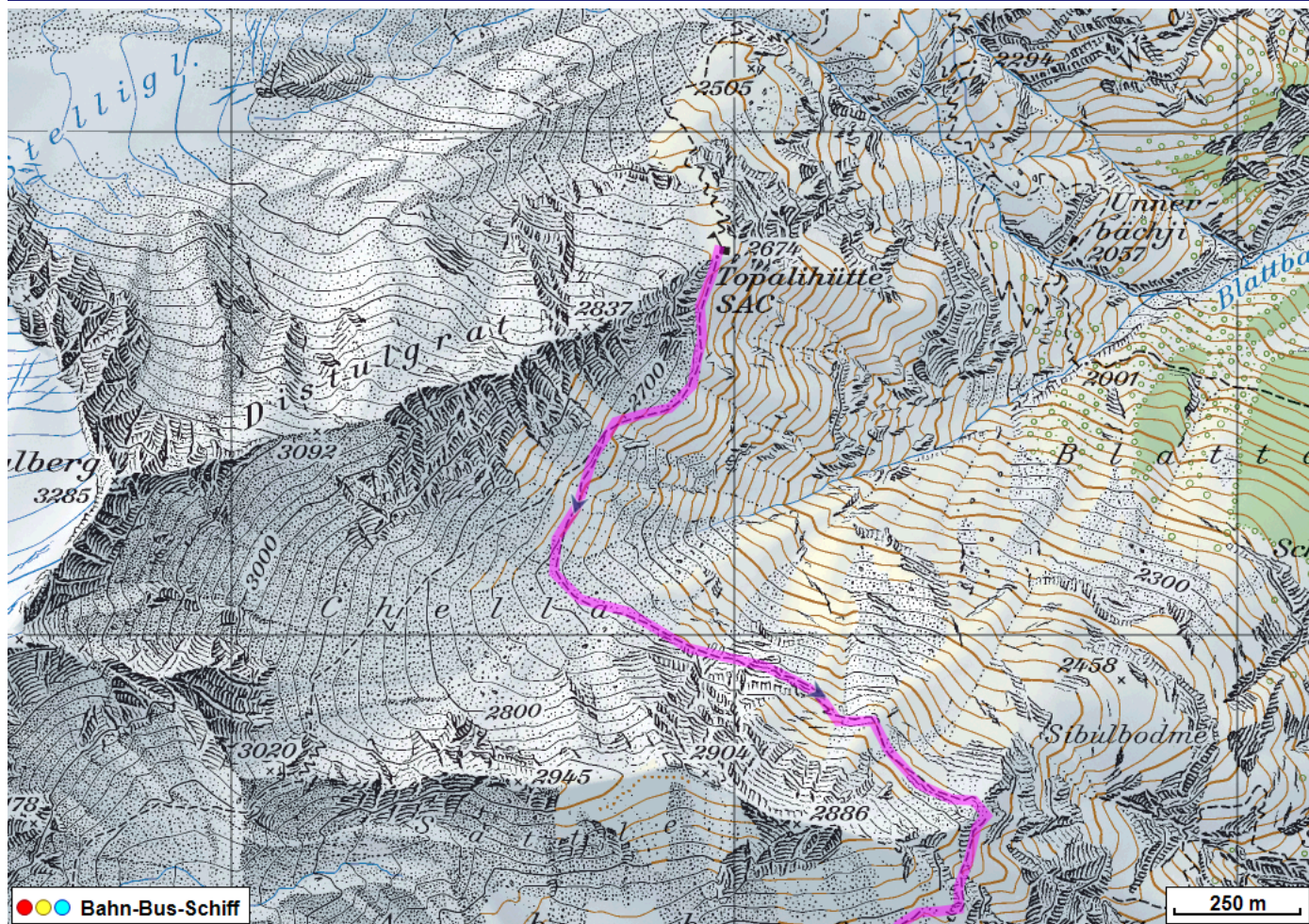
Höchster Punkt: 2725 m.ü.M.

Tourenbeschreibung

Bergwanderung Topalihütte Randa



Bergwanderung Topalihütte Randa



Bergwanderung Topalihütte Randa



Höhenprofil

