

---

# Bergwanderung Wasulücke Topalihütte

---



**Distanz:** 11.5 km

**Zeitbedarf:** 5¼ h

**Aufstieg:** 1320 m

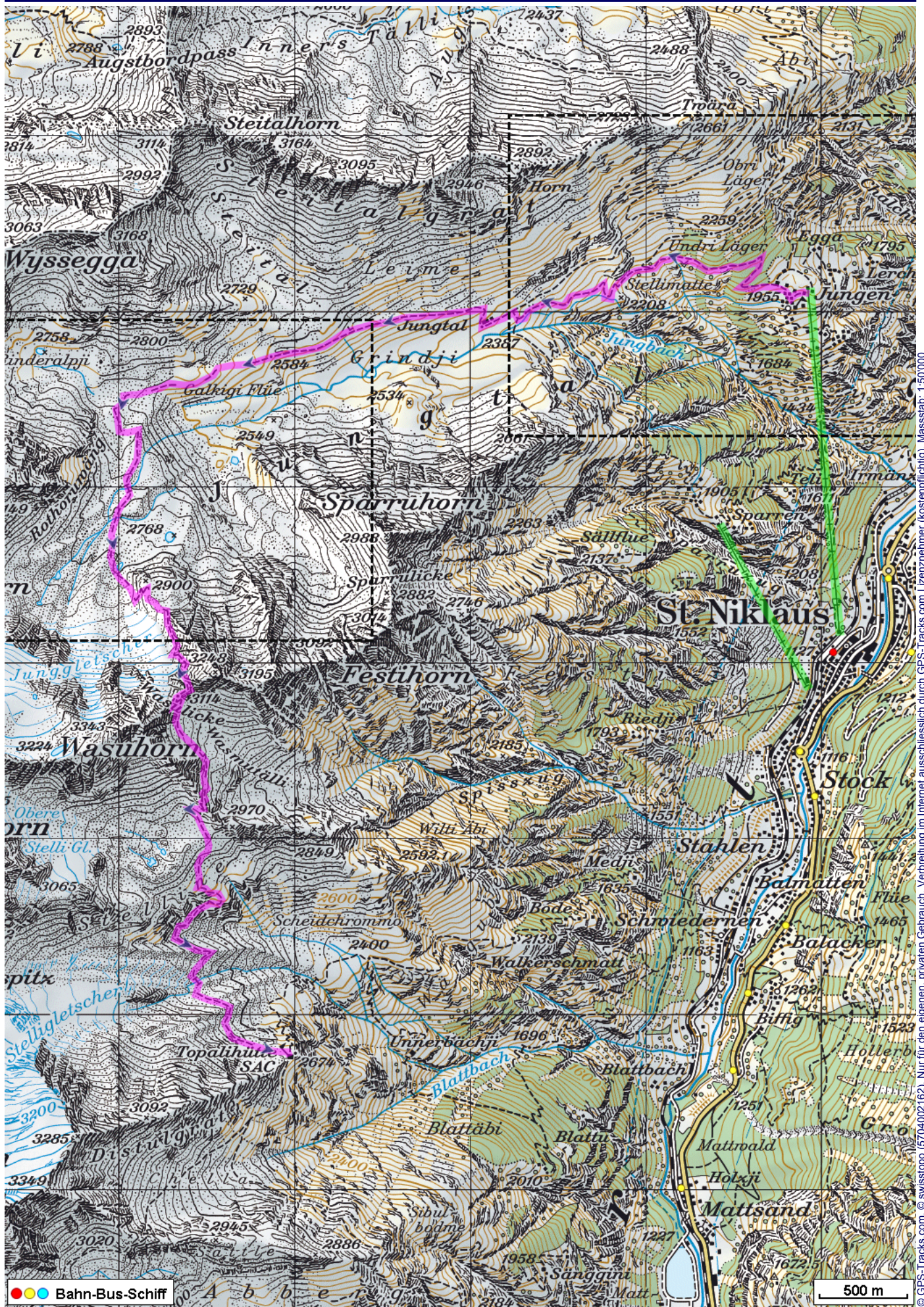
**Abstieg:** 580 m

**Höchster Punkt:** 3114 m.ü.M.

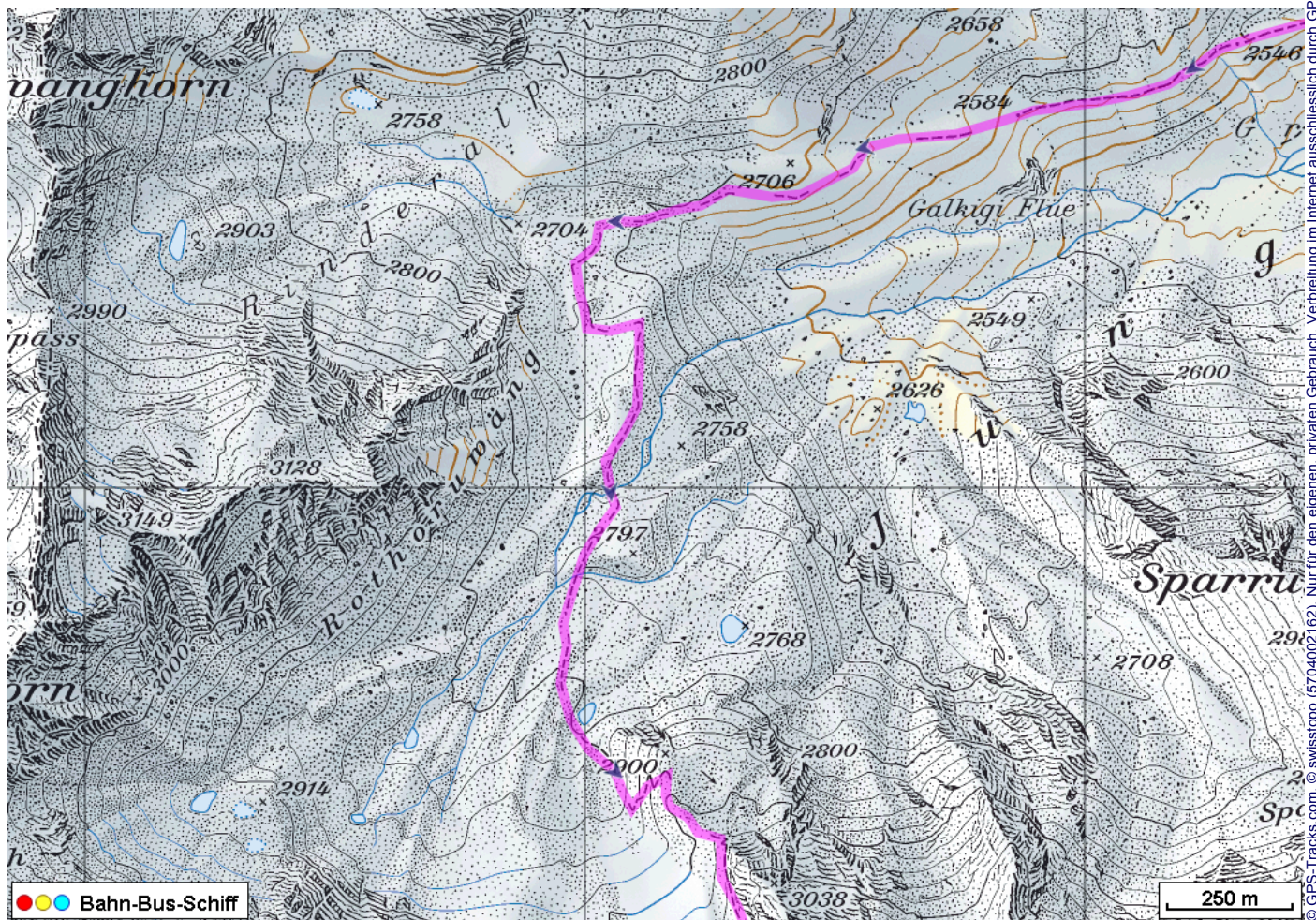
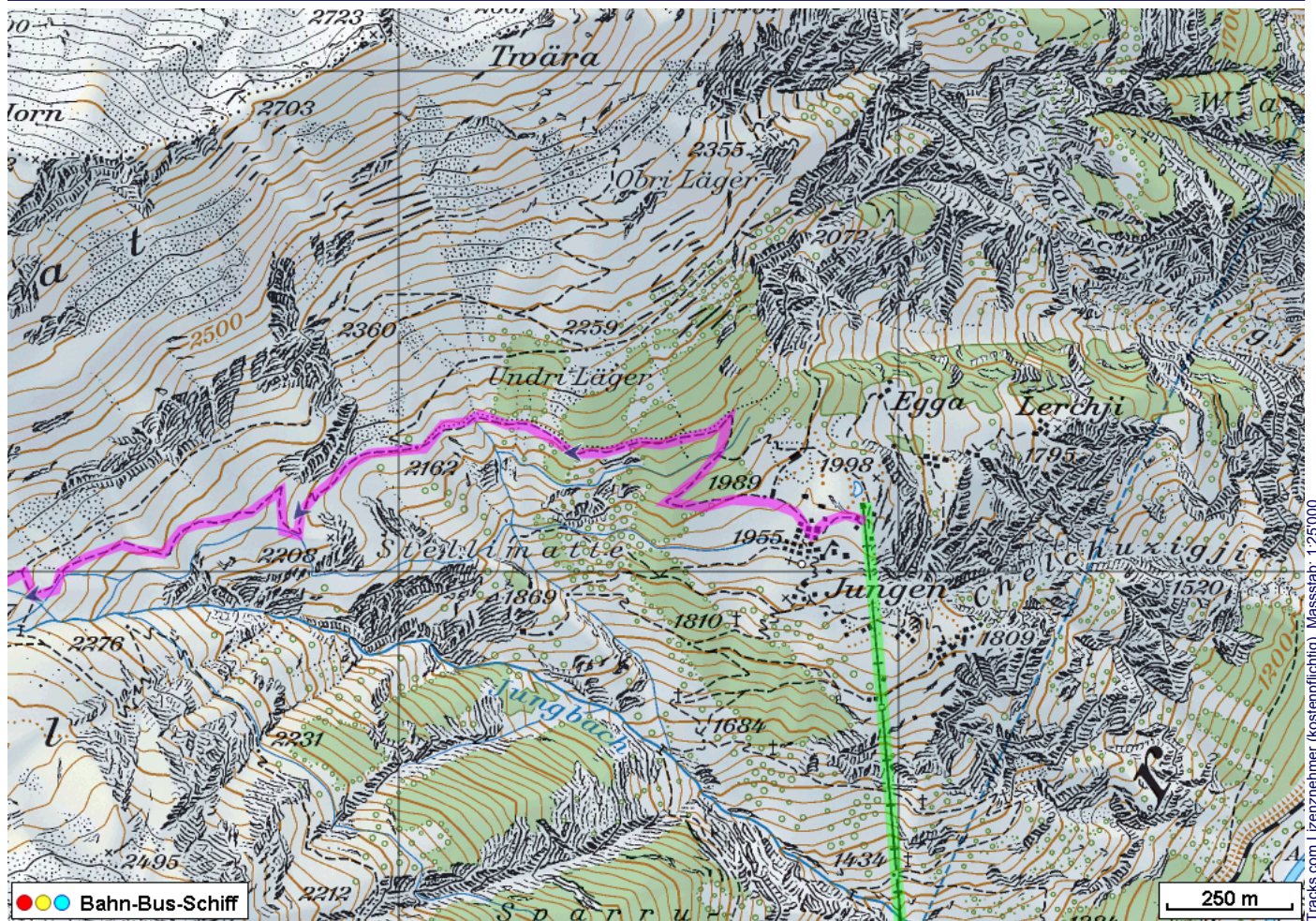
---

## Tourenbeschreibung

# Bergwanderung Wasulücke Topalihütte



# Bergwanderung Wasulücke Topalihütte



# Bergwanderung Wasulücke Topalihütte



## Höhenprofil

